



Vysoká škola technická a ekonomická  
v Českých Budějovicích

# PROJEKT NOVOSTAVBY ZADANÉHO OBJEKTU V ROZSAHU PROJEKTU PRO PROVEDENÍ STAVBY

Autor diplomové práce:  
Vedoucí diplomové práce:  
Oponent diplomové práce:  
České Budějovice, Červen 2021

Bc. Zuzana Buchtová  
doc. Dr. Ing. Luboš Podolka  
Ing. Jiří Teslík, Ph.D.

# Obsah

- Projekt pro provedení stavby
- Cíl práce
- Bytový dům s komerčním prostorem
- Výkresová část
- Závěrečné shrnutí
- Otázky od vedoucího práce
- Otázky od oponenta

# Projektová dokumentace pro provedení stavby

- zájem o projektování staveb a navrhování dispozic
- získat současné znalosti v oblasti moderního bydlení, používaných materiálech a technologiích
- porovnání praxe ze studijním typem
- zajistit soulad projektové dokumentace s normami a předpisy
- volba vhodné lokality pro umístění objektu
- návrh bytového domu s komerční plochou

## Cíl práce

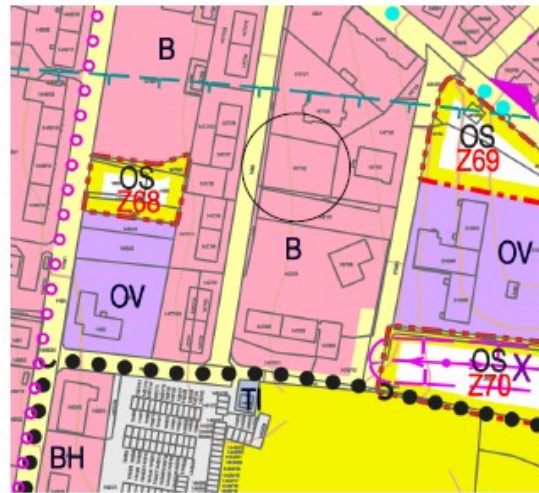
- návrh projektu novostavby zadaného objektu pro provedení stavby
- vypracovat min. 4 části projektové dokumentace definované stavebním zákonem tj. textovou i výkresovou část
- projektovou dokumentaci zpracovat dle platných norem a daných předpisů
- navrhnout funkční objekt novostavby bytového domu s komerční plochou

# Bytový dům s komerčním prostorem

- osazení objektu na pravidelné rovinné stavební parcele nedaleko centra
- bytový dům má čtyři nadzemní podlaží a je nepodsklepený
- půdorysný tvar je obdélníkový, zastavěná plocha je 351 m<sup>2</sup>
- budova je členěna na část bytovou a část komerční
- v přízemí je komerční prostor, zázemí celé budovy a garáže
- v 2.NP - 4.NP je navrženo 10 bytových jednotek

- základové pasy z prostého betonu
- zdivo ze systému POROTHERM
- stropní panely Spiroll
- střechy ploché se sklonem 2
- schodiště monolitické
- vytápění plynovým kotlem
- větrání mechanické

# Situace širších vztahů



## VÝUKOVÁ VERZE ARCHICADU

HNANÍDE, IDENTIFIKACE PLOCH	ÚZEMNÍ SYSTÉM EKOLOGICKÉ STABILITY																																																																																																																																																																																																																																																																																																																																																																																																																																																																																																																																																																																																																																																																																																																																																																																																																																																																																																																																																																																																																																																																																																																																											
<table border="1"> <tr><td>1</td><td>1.1</td><td>1.2</td><td>1.3</td><td>1.4</td><td>1.5</td><td>1.6</td><td>1.7</td><td>1.8</td><td>1.9</td><td>1.10</td></tr> <tr><td>2</td><td>2.1</td><td>2.2</td><td>2.3</td><td>2.4</td><td>2.5</td><td>2.6</td><td>2.7</td><td>2.8</td><td>2.9</td><td>2.10</td></tr> <tr><td>3</td><td>3.1</td><td>3.2</td><td>3.3</td><td>3.4</td><td>3.5</td><td>3.6</td><td>3.7</td><td>3.8</td><td>3.9</td><td>3.10</td></tr> <tr><td>4</td><td>4.1</td><td>4.2</td><td>4.3</td><td>4.4</td><td>4.5</td><td>4.6</td><td>4.7</td><td>4.8</td><td>4.9</td><td>4.10</td></tr> <tr><td>5</td><td>5.1</td><td>5.2</td><td>5.3</td><td>5.4</td><td>5.5</td><td>5.6</td><td>5.7</td><td>5.8</td><td>5.9</td><td>5.10</td></tr> <tr><td>6</td><td>6.1</td><td>6.2</td><td>6.3</td><td>6.4</td><td>6.5</td><td>6.6</td><td>6.7</td><td>6.8</td><td>6.9</td><td>6.10</td></tr> <tr><td>7</td><td>7.1</td><td>7.2</td><td>7.3</td><td>7.4</td><td>7.5</td><td>7.6</td><td>7.7</td><td>7.8</td><td>7.9</td><td>7.10</td></tr> <tr><td>8</td><td>8.1</td><td>8.2</td><td>8.3</td><td>8.4</td><td>8.5</td><td>8.6</td><td>8.7</td><td>8.8</td><td>8.9</td><td>8.10</td></tr> <tr><td>9</td><td>9.1</td><td>9.2</td><td>9.3</td><td>9.4</td><td>9.5</td><td>9.6</td><td>9.7</td><td>9.8</td><td>9.9</td><td>9.10</td></tr> <tr><td>10</td><td>10.1</td><td>10.2</td><td>10.3</td><td>10.4</td><td>10.5</td><td>10.6</td><td>10.7</td><td>10.8</td><td>10.9</td><td>10.10</td></tr> <tr><td>11</td><td>11.1</td><td>11.2</td><td>11.3</td><td>11.4</td><td>11.5</td><td>11.6</td><td>11.7</td><td>11.8</td><td>11.9</td><td>11.10</td></tr> <tr><td>12</td><td>12.1</td><td>12.2</td><td>12.3</td><td>12.4</td><td>12.5</td><td>12.6</td><td>12.7</td><td>12.8</td><td>12.9</td><td>12.10</td></tr> <tr><td>13</td><td>13.1</td><td>13.2</td><td>13.3</td><td>13.4</td><td>13.5</td><td>13.6</td><td>13.7</td><td>13.8</td><td>13.9</td><td>13.10</td></tr> <tr><td>14</td><td>14.1</td><td>14.2</td><td>14.3</td><td>14.4</td><td>14.5</td><td>14.6</td><td>14.7</td><td>14.8</td><td>14.9</td><td>14.10</td></tr> <tr><td>15</td><td>15.1</td><td>15.2</td><td>15.3</td><td>15.4</td><td>15.5</td><td>15.6</td><td>15.7</td><td>15.8</td><td>15.9</td><td>15.10</td></tr> <tr><td>16</td><td>16.1</td><td>16.2</td><td>16.3</td><td>16.4</td><td>16.5</td><td>16.6</td><td>16.7</td><td>16.8</td><td>16.9</td><td>16.10</td></tr> <tr><td>17</td><td>17.1</td><td>17.2</td><td>17.3</td><td>17.4</td><td>17.5</td><td>17.6</td><td>17.7</td><td>17.8</td><td>17.9</td><td>17.10</td></tr> <tr><td>18</td><td>18.1</td><td>18.2</td><td>18.3</td><td>18.4</td><td>18.5</td><td>18.6</td><td>18.7</td><td>18.8</td><td>18.9</td><td>18.10</td></tr> <tr><td>19</td><td>19.1</td><td>19.2</td><td>19.3</td><td>19.4</td><td>19.5</td><td>19.6</td><td>19.7</td><td>19.8</td><td>19.9</td><td>19.10</td></tr> <tr><td>20</td><td>20.1</td><td>20.2</td><td>20.3</td><td>20.4</td><td>20.5</td><td>20.6</td><td>20.7</td><td>20.8</td><td>20.9</td><td>20.10</td></tr> <tr><td>21</td><td>21.1</td><td>21.2</td><td>21.3</td><td>21.4</td><td>21.5</td><td>21.6</td><td>21.7</td><td>21.8</td><td>21.9</td><td>21.10</td></tr> <tr><td>22</td><td>22.1</td><td>22.2</td><td>22.3</td><td>22.4</td><td>22.5</td><td>22.6</td><td>22.7</td><td>22.8</td><td>22.9</td><td>22.10</td></tr> <tr><td>23</td><td>23.1</td><td>23.2</td><td>23.3</td><td>23.4</td><td>23.5</td><td>23.6</td><td>23.7</td><td>23.8</td><td>23.9</td><td>23.10</td></tr> <tr><td>24</td><td>24.1</td><td>24.2</td><td>24.3</td><td>24.4</td><td>24.5</td><td>24.6</td><td>24.7</td><td>24.8</td><td>24.9</td><td>24.10</td></tr> <tr><td>25</td><td>25.1</td><td>25.2</td><td>25.3</td><td>25.4</td><td>25.5</td><td>25.6</td><td>25.7</td><td>25.8</td><td>25.9</td><td>25.10</td></tr> <tr><td>26</td><td>26.1</td><td>26.2</td><td>26.3</td><td>26.4</td><td>26.5</td><td>26.6</td><td>26.7</td><td>26.8</td><td>26.9</td><td>26.10</td></tr> <tr><td>27</td><td>27.1</td><td>27.2</td><td>27.3</td><td>27.4</td><td>27.5</td><td>27.6</td><td>27.7</td><td>27.8</td><td>27.9</td><td>27.10</td></tr> <tr><td>28</td><td>28.1</td><td>28.2</td><td>28.3</td><td>28.4</td><td>28.5</td><td>28.6</td><td>28.7</td><td>28.8</td><td>28.9</td><td>28.10</td></tr> <tr><td>29</td><td>29.1</td><td>29.2</td><td>29.3</td><td>29.4</td><td>29.5</td><td>29.6</td><td>29.7</td><td>29.8</td><td>29.9</td><td>29.10</td></tr> <tr><td>30</td><td>30.1</td><td>30.2</td><td>30.3</td><td>30.4</td><td>30.5</td><td>30.6</td><td>30.7</td><td>30.8</td><td>30.9</td><td>30.10</td></tr> <tr><td>31</td><td>31.1</td><td>31.2</td><td>31.3</td><td>31.4</td><td>31.5</td><td>31.6</td><td>31.7</td><td>31.8</td><td>31.9</td><td>31.10</td></tr> <tr><td>32</td><td>32.1</td><td>32.2</td><td>32.3</td><td>32.4</td><td>32.5</td><td>32.6</td><td>32.7</td><td>32.8</td><td>32.9</td><td>32.10</td></tr> <tr><td>33</td><td>33.1</td><td>33.2</td><td>33.3</td><td>33.4</td><td>33.5</td><td>33.6</td><td>33.7</td><td>33.8</td><td>33.9</td><td>33.10</td></tr> <tr><td>34</td><td>34.1</td><td>34.2</td><td>34.3</td><td>34.4</td><td>34.5</td><td>34.6</td><td>34.7</td><td>34.8</td><td>34.9</td><td>34.10</td></tr> <tr><td>35</td><td>35.1</td><td>35.2</td><td>35.3</td><td>35.4</td><td>35.5</td><td>35.6</td><td>35.7</td><td>35.8</td><td>35.9</td><td>35.10</td></tr> <tr><td>36</td><td>36.1</td><td>36.2</td><td>36.3</td><td>36.4</td><td>36.5</td><td>36.6</td><td>36.7</td><td>36.8</td><td>36.9</td><td>36.10</td></tr> <tr><td>37</td><td>37.1</td><td>37.2</td><td>37.3</td><td>37.4</td><td>37.5</td><td>37.6</td><td>37.7</td><td>37.8</td><td>37.9</td><td>37.10</td></tr> <tr><td>38</td><td>38.1</td><td>38.2</td><td>38.3</td><td>38.4</td><td>38.5</td><td>38.6</td><td>38.7</td><td>38.8</td><td>38.9</td><td>38.10</td></tr> <tr><td>39</td><td>39.1</td><td>39.2</td><td>39.3</td><td>39.4</td><td>39.5</td><td>39.6</td><td>39.7</td><td>39.8</td><td>39.9</td><td>39.10</td></tr> <tr><td>40</td><td>40.1</td><td>40.2</td><td>40.3</td><td>40.4</td><td>40.5</td><td>40.6</td><td>40.7</td><td>40.8</td><td>40.9</td><td>40.10</td></tr> <tr><td>41</td><td>41.1</td><td>41.2</td><td>41.3</td><td>41.4</td><td>41.5</td><td>41.6</td><td>41.7</td><td>41.8</td><td>41.9</td><td>41.10</td></tr> <tr><td>42</td><td>42.1</td><td>42.2</td><td>42.3</td><td>42.4</td><td>42.5</td><td>42.6</td><td>42.7</td><td>42.8</td><td>42.9</td><td>42.10</td></tr> <tr><td>43</td><td>43.1</td><td>43.2</td><td>43.3</td><td>43.4</td><td>43.5</td><td>43.6</td><td>43.7</td><td>43.8</td><td>43.9</td><td>43.10</td></tr> <tr><td>44</td><td>44.1</td><td>44.2</td><td>44.3</td><td>44.4</td><td>44.5</td><td>44.6</td><td>44.7</td><td>44.8</td><td>44.9</td><td>44.10</td></tr> <tr><td>45</td><td>45.1</td><td>45.2</td><td>45.3</td><td>45.4</td><td>45.5</td><td>45.6</td><td>45.7</td><td>45.8</td><td>45.9</td><td>45.10</td></tr> <tr><td>46</td><td>46.1</td><td>46.2</td><td>46.3</td><td>46.4</td><td>46.5</td><td>46.6</td><td>46.7</td><td>46.8</td><td>46.9</td><td>46.10</td></tr> <tr><td>47</td><td>47.1</td><td>47.2</td><td>47.3</td><td>47.4</td><td>47.5</td><td>47.6</td><td>47.7</td><td>47.8</td><td>47.9</td><td>47.10</td></tr> <tr><td>48</td><td>48.1</td><td>48.2</td><td>48.3</td><td>48.4</td><td>48.5</td><td>48.6</td><td>48.7</td><td>48.8</td><td>48.9</td><td>48.10</td></tr> <tr><td>49</td><td>49.1</td><td>49.2</td><td>49.3</td><td>49.4</td><td>49.5</td><td>49.6</td><td>49.7</td><td>49.8</td><td>49.9</td><td>49.10</td></tr> <tr><td>50</td><td>50.1</td><td>50.2</td><td>50.3</td><td>50.4</td><td>50.5</td><td>50.6</td><td>50.7</td><td>50.8</td><td>50.9</td><td>50.10</td></tr> <tr><td>51</td><td>51.1</td><td>51.2</td><td>51.3</td><td>51.4</td><td>51.5</td><td>51.6</td><td>51.7</td><td>51.8</td><td>51.9</td><td>51.10</td></tr> <tr><td>52</td><td>52.1</td><td>52.2</td><td>52.3</td><td>52.4</td><td>52.5</td><td>52.6</td><td>52.7</td><td>52.8</td><td>52.9</td><td>52.10</td></tr> <tr><td>53</td><td>53.1</td><td>53.2</td><td>53.3</td><td>53.4</td><td>53.5</td><td>53.6</td><td>53.7</td><td>53.8</td><td>53.9</td><td>53.10</td></tr> <tr><td>54</td><td>54.1</td><td>54.2</td><td>54.3</td><td>54.4</td><td>54.5</td><td>54.6</td><td>54.7</td><td>54.8</td><td>54.9</td><td>54.10</td></tr> <tr><td>55</td><td>55.1</td><td>55.2</td><td>55.3</td><td>55.4</td><td>55.5</td><td>55.6</td><td>55.7</td><td>55.8</td><td>55.9</td><td>55.10</td></tr> <tr><td>56</td><td>56.1</td><td>56.2</td><td>56.3</td><td>56.4</td><td>56.5</td><td>56.6</td><td>56.7</td><td>56.8</td><td>56.9</td><td>56.10</td></tr> <tr><td>57</td><td>57.1</td><td>57.2</td><td>57.3</td><td>57.4</td><td>57.5</td><td>57.6</td><td>57.7</td><td>57.8</td><td>57.9</td><td>57.10</td></tr> <tr><td>58</td><td>58.1</td><td>58.2</td><td>58.3</td><td>58.4</td><td>58.5</td><td>58.6</td><td>58.7</td><td>58.8</td><td>58.9</td><td>58.10</td></tr> <tr><td>59</td><td>59.1</td><td>59.2</td><td>59.3</td><td>59.4</td><td>59.5</td><td>59.6</td><td>59.7</td><td>59.8</td><td>59.9</td><td>59.10</td></tr> <tr><td>60</td><td>60.1</td><td>60.2</td><td>60.3</td><td>60.4</td><td>60.5</td><td>60.6</td><td>60.7</td><td>60.8</td><td>60.9</td><td>60.10</td></tr> <tr><td>61</td><td>61.1</td><td>61.2</td><td>61.3</td><td>61.4</td><td>61.5</td><td>61.6</td><td>61.7</td><td>61.8</td><td>61.9</td><td>61.10</td></tr> <tr><td>62</td><td>62.1</td><td>62.2</td><td>62.3</td><td>62.4</td><td>62.5</td><td>62.6</td><td>62.7</td><td>62.8</td><td>62.9</td><td>62.10</td></tr> <tr><td>63</td><td>63.1</td><td>63.2</td><td>63.3</td><td>63.4</td><td>63.5</td><td>63.6</td><td>63.7</td><td>63.8</td><td>63.9</td><td>63.10</td></tr> <tr><td>64</td><td>64.1</td><td>64.2</td><td>64.3</td><td>64.4</td><td>64.5</td><td>64.6</td><td>64.7</td><td>64.8</td><td>64.9</td><td>64.10</td></tr> <tr><td>65</td><td>65.1</td><td>65.2</td><td>65.3</td><td>65.4</td><td>65.5</td><td>65.6</td><td>65.7</td><td>65.8</td><td>65.9</td><td>65.10</td></tr> <tr><td>66</td><td>66.1</td><td>66.2</td><td>66.3</td><td>66.4</td><td>66.5</td><td>66.6</td><td>66.7</td><td>66.8</td><td>66.9</td><td>66.10</td></tr> <tr><td>67</td><td>67.1</td><td>67.2</td><td>67.3</td><td>67.4</td><td>67.5</td><td>67.6</td><td>67.7</td><td>67.8</td><td>67.9</td><td>67.10</td></tr> <tr><td>68</td><td>68.1</td><td>68.2</td><td>68.3</td><td>68.4</td><td>68.5</td><td>68.6</td><td>68.7</td><td>68.8</td><td>68.9</td><td>68.10</td></tr> <tr><td>69</td><td>69.1</td><td>69.2</td><td>69.3</td><td>69.4</td><td>69.5</td><td>69.6</td><td>69.7</td><td>69.8</td><td>69.9</td><td>69.10</td></tr> <tr><td>70</td><td>70.1</td><td>70.2</td><td>70.3</td><td>70.4</td><td>70.5</td><td>70.6</td><td>70.7</td><td>70.8</td><td>70.9</td><td>70.10</td></tr> <tr><td>71</td><td>71.1</td><td>71.2</td><td>71.3</td><td>71.4</td><td>71.5</td><td>71.6</td><td>71.7</td><td>71.8</td><td>71.9</td><td>71.10</td></tr> <tr><td>72</td><td>72.1</td><td>72.2</td><td>72.3</td><td>72.4</td><td>72.5</td><td>72.6</td><td>72.7</td><td>72.8</td><td>72.9</td><td>72.10</td></tr> <tr><td>73</td><td>73.1</td><td>73.2</td><td>73.3</td><td>73.4</td><td>73.5</td><td>73.6</td><td>73.7</td><td>73.8</td><td>73.9</td><td>73.10</td></tr> <tr><td>74</td><td>74.1</td><td>74.2</td><td>74.3</td><td>74.4</td><td>74.5</td><td>74.6</td><td>74.7</td><td>74.8</td><td>74.9</td><td>74.10</td></tr> <tr><td>75</td><td>75.1</td><td>75.2</td><td>75.3</td><td>75.4</td><td>75.5</td><td>75.6</td><td>75.7</td><td>75.8</td><td>75.9</td><td>75.10</td></tr> <tr><td>76</td><td>76.1</td><td>76.2</td><td>76.3</td><td>76.4</td><td>76.5</td><td>76.6</td><td>76.7</td><td>76.8</td><td>76.9</td><td>76.10</td></tr> <tr><td>77</td><td>77.1</td><td>77.2</td><td>77.3</td><td>77.4</td><td>77.5</td><td>77.6</td><td>77.7</td><td>77.8</td><td>77.9</td><td>77.10</td></tr> <tr><td>78</td><td>78.1</td><td>78.2</td><td>78.3</td><td>78.4</td><td>78.5</td><td>78.6</td><td>78.7</td><td>78.8</td><td>78.9</td><td>78.10</td></tr> <tr><td>79</td><td>79.1</td><td>79.2</td><td>79.3</td><td>79.4</td><td>79.5</td><td>79.6</td><td>79.7</td><td>79.8</td><td>79.9</td><td>79.10</td></tr> <tr><td>80</td><td>80.1</td><td>80.2</td><td>80.3</td><td>80.4</td><td>80.5</td><td>80.6</td><td>80.7</td><td>80.8</td><td>80.9</td><td>80.10</td></tr> <tr><td>81</td><td>81.1</td><td>81.2</td><td>81.3</td><td>81.4</td><td>81.5</td><td>81.6</td><td>81.7</td><td>81.8</td><td>81.9</td><td>81.10</td></tr> <tr><td>82</td><td>82.1</td><td>82.2</td><td>82.3</td><td>82.4</td><td>82.5</td><td>82.6</td><td>82.7</td><td>82.8</td><td>82.9</td><td>82.10</td></tr> <tr><td>83</td><td>83.1</td><td>83.2</td><td>83.3</td><td>83.4</td><td>83.5</td><td>83.6</td><td>83.7</td><td>83.8</td><td>83.9</td><td>83.10</td></tr> <tr><td>84</td><td>84.1</td><td>84.2</td><td>84.3</td><td>84.4</td><td>84.5</td><td>84.6</td><td>84.7</td><td>84.8</td><td>84.9</td><td>84.10</td></tr> <tr><td>85</td><td>85.1</td><td>85.2</td><td>85.3</td><td>85.4</td><td>85.5</td><td>85.6</td><td>85.7</td><td>85.8</td><td>85.9</td><td>85.10</td></tr> <tr><td>86</td><td>86.1</td><td>86.2</td><td>86.3</td><td>86.4</td><td>86.5</td><td>86.6</td><td>86.7</td><td>86.8</td><td>86.9</td><td>86.10</td></tr> <tr><td>87</td><td>87.1</td><td>87.2</td><td>87.3</td><td>87.4</td><td>87.5</td><td>87.6</td><td>87.7</td><td>87.8</td><td>87.9</td><td>87.10</td></tr> <tr><td>88</td><td>88.1</td><td>88.2</td><td>88.3</td><td>88.4</td><td>88.5</td><td>88.6</td><td>88.7</td><td>88.8</td><td>88.9</td><td>88.10</td></tr> <tr><td>89</td><td>89.1</td><td>89.2</td><td>89.3</td><td>89.4</td><td>89.5</td><td>89.6</td><td>89.7</td><td>89.8</td><td>89.9</td><td>89.10</td></tr> <tr><td>90</td><td>90.1</td><td>90.2</td><td>90.3</td><td>90.4</td><td>90.5</td><td>90.6</td><td>90.7</td><td>90.8</td><td>90.9</td><td>90.10</td></tr> <tr><td>91</td><td>91.1</td><td>91.2</td><td>91.3</td><td>91.4</td><td>91.5</td><td>91.6</td><td>91.7</td><td>91.8</td><td>91.9</td><td>91.10</td></tr> <tr><td>92</td><td>92.1</td><td>92.2</td><td>92.3</td><td>92.4</td><td>92.5</td><td>92.6</td><td>92.7</td><td>92.8</td><td>92.9</td><td>92.10</td></tr> <tr><td>93</td><td>93.1</td><td>93.2</td><td>93.3</td><td>93.4</td><td>93.5</td><td>93.6</td><td>93.7</td><td>93.8</td><td>93.9</td><td>93.10</td></tr> <tr><td>94</td><td>94.1</td><td>94.2</td><td>94.3</td><td>94.4</td><td>94.5</td><td>94.6</td><td>94.7</td><td>94.8</td><td>94.9</td><td>94.10</td></tr> <tr><td>95</td><td>95.1</td><td>95.2</td><td>95.3</td><td>95.4</td><td>95.5</td><td>95.6</td><td>95.7</td><td>95.8</td><td>95.9</td><td>95.10</td></tr> <tr><td>96</td><td>96.1</td><td>96.2</td><td>96.3</td><td>96.4</td><td>96.5</td><td>96.6</td><td>96.7</td><td>96.8</td><td>96.9</td><td>96.10</td></tr> <tr><td>97</td><td>97.1</td><td>97.2</td><td>97.3</td><td>97.4</td><td>97.5</td><td>97.6</td><td>97.7</td><td>97.8</td><td>97.9</td><td>97.10</td></tr> <tr><td>98</td><td>98.1</td><td>98.2</td><td>98.3</td><td>98.4</td><td>98.5</td><td>98.6</td><td>98.7</td><td>98.8</td><td>98.9</td><td>98.10</td></tr> <tr><td>99</td><td>99.1</td><td>99.2</td><td>99.3</td><td>99.4</td><td>99.5</td><td>99.6</td><td>99.7</td><td>99.8</td><td>99.9</td><td>99.10</td></tr> <tr><td>100</td><td>100.1</td><td>100.2</td><td>100.3</td><td>100.4</td><td>100.5</td><td>100.6</td><td>100.7</td><td>100.8</td><td>100.9</td><td>100.10</td></tr> </table>	1	1.1	1.2	1.3	1.4	1.5	1.6	1.7	1.8	1.9	1.10	2	2.1	2.2	2.3	2.4	2.5	2.6	2.7	2.8	2.9	2.10	3	3.1	3.2	3.3	3.4	3.5	3.6	3.7	3.8	3.9	3.10	4	4.1	4.2	4.3	4.4	4.5	4.6	4.7	4.8	4.9	4.10	5	5.1	5.2	5.3	5.4	5.5	5.6	5.7	5.8	5.9	5.10	6	6.1	6.2	6.3	6.4	6.5	6.6	6.7	6.8	6.9	6.10	7	7.1	7.2	7.3	7.4	7.5	7.6	7.7	7.8	7.9	7.10	8	8.1	8.2	8.3	8.4	8.5	8.6	8.7	8.8	8.9	8.10	9	9.1	9.2	9.3	9.4	9.5	9.6	9.7	9.8	9.9	9.10	10	10.1	10.2	10.3	10.4	10.5	10.6	10.7	10.8	10.9	10.10	11	11.1	11.2	11.3	11.4	11.5	11.6	11.7	11.8	11.9	11.10	12	12.1	12.2	12.3	12.4	12.5	12.6	12.7	12.8	12.9	12.10	13	13.1	13.2	13.3	13.4	13.5	13.6	13.7	13.8	13.9	13.10	14	14.1	14.2	14.3	14.4	14.5	14.6	14.7	14.8	14.9	14.10	15	15.1	15.2	15.3	15.4	15.5	15.6	15.7	15.8	15.9	15.10	16	16.1	16.2	16.3	16.4	16.5	16.6	16.7	16.8	16.9	16.10	17	17.1	17.2	17.3	17.4	17.5	17.6	17.7	17.8	17.9	17.10	18	18.1	18.2	18.3	18.4	18.5	18.6	18.7	18.8	18.9	18.10	19	19.1	19.2	19.3	19.4	19.5	19.6	19.7	19.8	19.9	19.10	20	20.1	20.2	20.3	20.4	20.5	20.6	20.7	20.8	20.9	20.10	21	21.1	21.2	21.3	21.4	21.5	21.6	21.7	21.8	21.9	21.10	22	22.1	22.2	22.3	22.4	22.5	22.6	22.7	22.8	22.9	22.10	23	23.1	23.2	23.3	23.4	23.5	23.6	23.7	23.8	23.9	23.10	24	24.1	24.2	24.3	24.4	24.5	24.6	24.7	24.8	24.9	24.10	25	25.1	25.2	25.3	25.4	25.5	25.6	25.7	25.8	25.9	25.10	26	26.1	26.2	26.3	26.4	26.5	26.6	26.7	26.8	26.9	26.10	27	27.1	27.2	27.3	27.4	27.5	27.6	27.7	27.8	27.9	27.10	28	28.1	28.2	28.3	28.4	28.5	28.6	28.7	28.8	28.9	28.10	29	29.1	29.2	29.3	29.4	29.5	29.6	29.7	29.8	29.9	29.10	30	30.1	30.2	30.3	30.4	30.5	30.6	30.7	30.8	30.9	30.10	31	31.1	31.2	31.3	31.4	31.5	31.6	31.7	31.8	31.9	31.10	32	32.1	32.2	32.3	32.4	32.5	32.6	32.7	32.8	32.9	32.10	33	33.1	33.2	33.3	33.4	33.5	33.6	33.7	33.8	33.9	33.10	34	34.1	34.2	34.3	34.4	34.5	34.6	34.7	34.8	34.9	34.10	35	35.1	35.2	35.3	35.4	35.5	35.6	35.7	35.8	35.9	35.10	36	36.1	36.2	36.3	36.4	36.5	36.6	36.7	36.8	36.9	36.10	37	37.1	37.2	37.3	37.4	37.5	37.6	37.7	37.8	37.9	37.10	38	38.1	38.2	38.3	38.4	38.5	38.6	38.7	38.8	38.9	38.10	39	39.1	39.2	39.3	39.4	39.5	39.6	39.7	39.8	39.9	39.10	40	40.1	40.2	40.3	40.4	40.5	40.6	40.7	40.8	40.9	40.10	41	41.1	41.2	41.3	41.4	41.5	41.6	41.7	41.8	41.9	41.10	42	42.1	42.2	42.3	42.4	42.5	42.6	42.7	42.8	42.9	42.10	43	43.1	43.2	43.3	43.4	43.5	43.6	43.7	43.8	43.9	43.10	44	44.1	44.2	44.3	44.4	44.5	44.6	44.7	44.8	44.9	44.10	45	45.1	45.2	45.3	45.4	45.5	45.6	45.7	45.8	45.9	45.10	46	46.1	46.2	46.3	46.4	46.5	46.6	46.7	46.8	46.9	46.10	47	47.1	47.2	47.3	47.4	47.5	47.6	47.7	47.8	47.9	47.10	48	48.1	48.2	48.3	48.4	48.5	48.6	48.7	48.8	48.9	48.10	49	49.1	49.2	49.3	49.4	49.5	49.6	49.7	49.8	49.9	49.10	50	50.1	50.2	50.3	50.4	50.5	50.6	50.7	50.8	50.9	50.10	51	51.1	51.2	51.3	51.4	51.5	51.6	51.7	51.8	51.9	51.10	52	52.1	52.2	52.3	52.4	52.5	52.6	52.7	52.8	52.9	52.10	53	53.1	53.2	53.3	53.4	53.5	53.6	53.7	53.8	53.9	53.10	54	54.1	54.2	54.3	54.4	54.5	54.6	54.7	54.8	54.9	54.10	55	55.1	55.2	55.3	55.4	55.5	55.6	55.7	55.8	55.9	55.10	56	56.1	56.2	56.3	56.4	56.5	56.6	56.7	56.8	56.9	56.10	57	57.1	57.2	57.3	57.4	57.5	57.6	57.7	57.8	57.9	57.10	58	58.1	58.2	58.3	58.4	58.5	58.6	58.7	58.8	58.9	58.10	59	59.1	59.2	59.3	59.4	59.5	59.6	59.7	59.8	59.9	59.10	60	60.1	60.2	60.3	60.4	60.5	60.6	60.7	60.8	60.9	60.10	61	61.1	61.2	61.3	61.4	61.5	61.6	61.7	61.8	61.9	61.10	62	62.1	62.2	62.3	62.4	62.5	62.6	62.7	62.8	62.9	62.10	63	63.1	63.2	63.3	63.4	63.5	63.6	63.7	63.8	63.9	63.10	64	64.1	64.2	64.3	64.4	64.5	64.6	64.7	64.8	64.9	64.10	65	65.1	65.2	65.3	65.4	65.5	65.6	65.7	65.8	65.9	65.10	66	66.1	66.2	66.3	66.4	66.5	66.6	66.7	66.8	66.9	66.10	67	67.1	67.2	67.3	67.4	67.5	67.6	67.7	67.8	67.9	67.10	68	68.1	68.2	68.3	68.4	68.5	68.6	68.7	68.8	68.9	68.10	69	69.1	69.2	69.3	69.4	69.5	69.6	69.7	69.8	69.9	69.10	70	70.1	70.2	70.3	70.4	70.5	70.6	70.7	70.8	70.9	70.10	71	71.1	71.2	71.3	71.4	71.5	71.6	71.7	71.8	71.9	71.10	72	72.1	72.2	72.3	72.4	72.5	72.6	72.7	72.8	72.9	72.10	73	73.1	73.2	73.3	73.4	73.5	73.6	73.7	73.8	73.9	73.10	74	74.1	74.2	74.3	74.4	74.5	74.6	74.7	74.8	74.9	74.10	75	75.1	75.2	75.3	75.4	75.5	75.6	75.7	75.8	75.9	75.10	76	76.1	76.2	76.3	76.4	76.5	76.6	76.7	76.8	76.9	76.10	77	77.1	77.2	77.3	77.4	77.5	77.6	77.7	77.8	77.9	77.10	78	78.1	78.2	78.3	78.4	78.5	78.6	78.7	78.8	78.9	78.10	79	79.1	79.2	79.3	79.4	79.5	79.6	79.7	79.8	79.9	79.10	80	80.1	80.2	80.3	80.4	80.5	80.6	80.7	80.8	80.9	80.10	81	81.1	81.2	81.3	81.4	81.5	81.6	81.7	81.8	81.9	81.10	82	82.1	82.2	82.3	82.4	82.5	82.6	82.7	82.8	82.9	82.10	83	83.1	83.2	83.3	83.4	83.5	83.6	83.7	83.8	83.9	83.10	84	84.1	84.2	84.3	84.4	84.5	84.6	84.7	84.8	84.9	84.10	85	85.1	85.2	85.3	85.4	85.5	85.6	85.7	85.8	85.9	85.10	86	86.1	86.2	86.3	86.4	86.5	86.6	86.7	86.8	86.9	86.10	87	87.1	87.2	87.3	87.4	87.5	87.6	87.7	87.8	87.9	87.10	88	88.1	88.2	88.3	88.4	88.5	88.6	88.7	88.8	88.9	88.10	89	89.1	89.2	89.3	89.4	89.5	89.6	89.7	89.8	89.9	89.10	90	90.1	90.2	90.3	90.4	90.5	90.6	90.7	90.8	90.9	90.10	91	91.1	91.2	91.3	91.4	91.5	91.6	91.7	91.8	91.9	91.10	92	92.1	92.2	92.3	92.4	92.5	92.6	92.7	92.8	92.9	92.10	93	93.1	93.2	93.3	93.4	93.5	93.6	93.7	93.8	93.9	93.10	94	94.1	94.2	94.3	94.4	94.5	94.6	94.7	94.8	94.9	94.10	95	95.1	95.2	95.3	95.4	95.5	95.6	95.7	95.8	95.9	95.10	96	96.1	96.2	96.3	96.4	96.5	96.6	96.7	96.8	96.9	96.10	97	97.1	97.2	97.3	97.4	97.5	97.6	97.7	97.8	97.9	97.10	98	98.1	98.2	98.3	98.4	98.5	98.6	98.7	98.8	98.9	98.10	99	99.1	99.2	99.3	99.4	99.5	99.6	99.7	99.8	99.9	99.10	100	100.1	100.2	100.3	100.4	100.5	100.6	100.7	100.8	100.9	100.10
1	1.1	1.2	1.3	1.4	1.5	1.6	1.7	1.8	1.9	1.10																																																																																																																																																																																																																																																																																																																																																																																																																																																																																																																																																																																																																																																																																																																																																																																																																																																																																																																																																																																																																																																																																																																																		
2	2.1	2.2	2.3	2.4	2.5	2.6	2.7	2.8	2.9	2.10																																																																																																																																																																																																																																																																																																																																																																																																																																																																																																																																																																																																																																																																																																																																																																																																																																																																																																																																																																																																																																																																																																																																		
3	3.1	3.2	3.3	3.4	3.5	3.6	3.7	3.8	3.9	3.10																																																																																																																																																																																																																																																																																																																																																																																																																																																																																																																																																																																																																																																																																																																																																																																																																																																																																																																																																																																																																																																																																																																																		
4	4.1	4.2	4.3	4.4	4.5	4.6	4.7	4.8	4.9	4.10																																																																																																																																																																																																																																																																																																																																																																																																																																																																																																																																																																																																																																																																																																																																																																																																																																																																																																																																																																																																																																																																																																																																		
5	5.1	5.2	5.3	5.4	5.5	5.6	5.7	5.8	5.9	5.10																																																																																																																																																																																																																																																																																																																																																																																																																																																																																																																																																																																																																																																																																																																																																																																																																																																																																																																																																																																																																																																																																																																																		
6	6.1	6.2	6.3	6.4	6.5	6.6	6.7	6.8	6.9	6.10																																																																																																																																																																																																																																																																																																																																																																																																																																																																																																																																																																																																																																																																																																																																																																																																																																																																																																																																																																																																																																																																																																																																		
7	7.1	7.2	7.3	7.4	7.5	7.6	7.7	7.8	7.9	7.10																																																																																																																																																																																																																																																																																																																																																																																																																																																																																																																																																																																																																																																																																																																																																																																																																																																																																																																																																																																																																																																																																																																																		
8	8.1	8.2	8.3	8.4	8.5	8.6	8.7	8.8	8.9	8.10																																																																																																																																																																																																																																																																																																																																																																																																																																																																																																																																																																																																																																																																																																																																																																																																																																																																																																																																																																																																																																																																																																																																		
9	9.1	9.2	9.3	9.4	9.5	9.6	9.7	9.8	9.9	9.10																																																																																																																																																																																																																																																																																																																																																																																																																																																																																																																																																																																																																																																																																																																																																																																																																																																																																																																																																																																																																																																																																																																																		
10	10.1	10.2	10.3	10.4	10.5	10.6	10.7	10.8	10.9	10.10																																																																																																																																																																																																																																																																																																																																																																																																																																																																																																																																																																																																																																																																																																																																																																																																																																																																																																																																																																																																																																																																																																																																		
11	11.1	11.2	11.3	11.4	11.5	11.6	11.7	11.8	11.9	11.10																																																																																																																																																																																																																																																																																																																																																																																																																																																																																																																																																																																																																																																																																																																																																																																																																																																																																																																																																																																																																																																																																																																																		
12	12.1	12.2	12.3	12.4	12.5	12.6	12.7	12.8	12.9	12.10																																																																																																																																																																																																																																																																																																																																																																																																																																																																																																																																																																																																																																																																																																																																																																																																																																																																																																																																																																																																																																																																																																																																		
13	13.1	13.2	13.3	13.4	13.5	13.6	13.7	13.8	13.9	13.10																																																																																																																																																																																																																																																																																																																																																																																																																																																																																																																																																																																																																																																																																																																																																																																																																																																																																																																																																																																																																																																																																																																																		
14	14.1	14.2	14.3	14.4	14.5	14.6	14.7	14.8	14.9	14.10																																																																																																																																																																																																																																																																																																																																																																																																																																																																																																																																																																																																																																																																																																																																																																																																																																																																																																																																																																																																																																																																																																																																		
15	15.1	15.2	15.3	15.4	15.5	15.6	15.7	15.8	15.9	15.10																																																																																																																																																																																																																																																																																																																																																																																																																																																																																																																																																																																																																																																																																																																																																																																																																																																																																																																																																																																																																																																																																																																																		
16	16.1	16.2	16.3	16.4	16.5	16.6	16.7	16.8	16.9	16.10																																																																																																																																																																																																																																																																																																																																																																																																																																																																																																																																																																																																																																																																																																																																																																																																																																																																																																																																																																																																																																																																																																																																		
17	17.1	17.2	17.3	17.4	17.5	17.6	17.7	17.8	17.9	17.10																																																																																																																																																																																																																																																																																																																																																																																																																																																																																																																																																																																																																																																																																																																																																																																																																																																																																																																																																																																																																																																																																																																																		
18	18.1	18.2	18.3	18.4	18.5	18.6	18.7	18.8	18.9	18.10																																																																																																																																																																																																																																																																																																																																																																																																																																																																																																																																																																																																																																																																																																																																																																																																																																																																																																																																																																																																																																																																																																																																		
19	19.1	19.2	19.3	19.4	19.5	19.6	19.7	19.8	19.9	19.10																																																																																																																																																																																																																																																																																																																																																																																																																																																																																																																																																																																																																																																																																																																																																																																																																																																																																																																																																																																																																																																																																																																																		
20	20.1	20.2	20.3	20.4	20.5	20.6	20.7	20.8	20.9	20.10																																																																																																																																																																																																																																																																																																																																																																																																																																																																																																																																																																																																																																																																																																																																																																																																																																																																																																																																																																																																																																																																																																																																		
21	21.1	21.2	21.3	21.4	21.5	21.6	21.7	21.8	21.9	21.10																																																																																																																																																																																																																																																																																																																																																																																																																																																																																																																																																																																																																																																																																																																																																																																																																																																																																																																																																																																																																																																																																																																																		
22	22.1	22.2	22.3	22.4	22.5	22.6	22.7	22.8	22.9	22.10																																																																																																																																																																																																																																																																																																																																																																																																																																																																																																																																																																																																																																																																																																																																																																																																																																																																																																																																																																																																																																																																																																																																		
23	23.1	23.2	23.3	23.4	23.5	23.6	23.7	23.8	23.9	23.10																																																																																																																																																																																																																																																																																																																																																																																																																																																																																																																																																																																																																																																																																																																																																																																																																																																																																																																																																																																																																																																																																																																																		
24	24.1	24.2	24.3	24.4	24.5	24.6	24.7	24.8	24.9	24.10																																																																																																																																																																																																																																																																																																																																																																																																																																																																																																																																																																																																																																																																																																																																																																																																																																																																																																																																																																																																																																																																																																																																		
25	25.1	25.2	25.3	25.4	25.5	25.6	25.7	25.8	25.9	25.10																																																																																																																																																																																																																																																																																																																																																																																																																																																																																																																																																																																																																																																																																																																																																																																																																																																																																																																																																																																																																																																																																																																																		
26	26.1	26.2	26.3	26.4	26.5	26.6	26.7	26.8	26.9	26.10																																																																																																																																																																																																																																																																																																																																																																																																																																																																																																																																																																																																																																																																																																																																																																																																																																																																																																																																																																																																																																																																																																																																		
27	27.1	27.2	27.3	27.4	27.5	27.6	27.7	27.8	27.9	27.10																																																																																																																																																																																																																																																																																																																																																																																																																																																																																																																																																																																																																																																																																																																																																																																																																																																																																																																																																																																																																																																																																																																																		
28	28.1	28.2	28.3	28.4	28.5	28.6	28.7	28.8	28.9	28.10																																																																																																																																																																																																																																																																																																																																																																																																																																																																																																																																																																																																																																																																																																																																																																																																																																																																																																																																																																																																																																																																																																																																		
29	29.1	29.2	29.3	29.4	29.5	29.6	29.7	29.8	29.9	29.10																																																																																																																																																																																																																																																																																																																																																																																																																																																																																																																																																																																																																																																																																																																																																																																																																																																																																																																																																																																																																																																																																																																																		
30	30.1	30.2	30.3	30.4	30.5	30.6	30.7	30.8	30.9	30.10																																																																																																																																																																																																																																																																																																																																																																																																																																																																																																																																																																																																																																																																																																																																																																																																																																																																																																																																																																																																																																																																																																																																		
31	31.1	31.2	31.3	31.4	31.5	31.6	31.7	31.8	31.9	31.10																																																																																																																																																																																																																																																																																																																																																																																																																																																																																																																																																																																																																																																																																																																																																																																																																																																																																																																																																																																																																																																																																																																																		
32	32.1	32.2	32.3	32.4	32.5	32.6	32.7	32.8	32.9	32.10																																																																																																																																																																																																																																																																																																																																																																																																																																																																																																																																																																																																																																																																																																																																																																																																																																																																																																																																																																																																																																																																																																																																		
33	33.1	33.2	33.3	33.4	33.5	33.6	33.7	33.8	33.9	33.10																																																																																																																																																																																																																																																																																																																																																																																																																																																																																																																																																																																																																																																																																																																																																																																																																																																																																																																																																																																																																																																																																																																																		
34	34.1	34.2	34.3	34.4	34.5	34.6	34.7	34.8	34.9	34.10																																																																																																																																																																																																																																																																																																																																																																																																																																																																																																																																																																																																																																																																																																																																																																																																																																																																																																																																																																																																																																																																																																																																		
35	35.1	35.2	35.3	35.4	35.5	35.6	35.7	35.8	35.9	35.10																																																																																																																																																																																																																																																																																																																																																																																																																																																																																																																																																																																																																																																																																																																																																																																																																																																																																																																																																																																																																																																																																																																																		
36	36.1	36.2	36.3	36.4	36.5	36.6	36.7	36.8	36.9	36.10																																																																																																																																																																																																																																																																																																																																																																																																																																																																																																																																																																																																																																																																																																																																																																																																																																																																																																																																																																																																																																																																																																																																		
37	37.1	37.2	37.3	37.4	37.5	37.6	37.7	37.8	37.9	37.10																																																																																																																																																																																																																																																																																																																																																																																																																																																																																																																																																																																																																																																																																																																																																																																																																																																																																																																																																																																																																																																																																																																																		
38	38.1	38.2	38.3	38.4	38.5	38.6	38.7	38.8	38.9	38.10																																																																																																																																																																																																																																																																																																																																																																																																																																																																																																																																																																																																																																																																																																																																																																																																																																																																																																																																																																																																																																																																																																																																		
39	39.1	39.2	39.3	39.4	39.5	39.6	39.7	39.8	39.9	39.10																																																																																																																																																																																																																																																																																																																																																																																																																																																																																																																																																																																																																																																																																																																																																																																																																																																																																																																																																																																																																																																																																																																																		
40	40.1	40.2	40.3	40.4	40.5	40.6	40.7	40.8	40.9	40.10																																																																																																																																																																																																																																																																																																																																																																																																																																																																																																																																																																																																																																																																																																																																																																																																																																																																																																																																																																																																																																																																																																																																		
41	41.1	41.2	41.3	41.4	41.5	41.6	41.7	41.8	41.9	41.10																																																																																																																																																																																																																																																																																																																																																																																																																																																																																																																																																																																																																																																																																																																																																																																																																																																																																																																																																																																																																																																																																																																																		
42	42.1	42.2	42.3	42.4	42.5	42.6	42.7	42.8	42.9	42.10																																																																																																																																																																																																																																																																																																																																																																																																																																																																																																																																																																																																																																																																																																																																																																																																																																																																																																																																																																																																																																																																																																																																		
43	43.1	43.2	43.3	43.4	43.5	43.6	43.7	43.8	43.9	43.10																																																																																																																																																																																																																																																																																																																																																																																																																																																																																																																																																																																																																																																																																																																																																																																																																																																																																																																																																																																																																																																																																																																																		
44	44.1	44.2	44.3	44.4	44.5	44.6	44.7	44.8	44.9	44.10																																																																																																																																																																																																																																																																																																																																																																																																																																																																																																																																																																																																																																																																																																																																																																																																																																																																																																																																																																																																																																																																																																																																		
45	45.1	45.2	45.3	45.4	45.5	45.6	45.7	45.8	45.9	45.10																																																																																																																																																																																																																																																																																																																																																																																																																																																																																																																																																																																																																																																																																																																																																																																																																																																																																																																																																																																																																																																																																																																																		
46	46.1	46.2	46.3	46.4	46.5	46.6	46.7	46.8	46.9	46.10																																																																																																																																																																																																																																																																																																																																																																																																																																																																																																																																																																																																																																																																																																																																																																																																																																																																																																																																																																																																																																																																																																																																		
47	47.1	47.2	47.3	47.4	47.5	47.6	47.7	47.8	47.9	47.10																																																																																																																																																																																																																																																																																																																																																																																																																																																																																																																																																																																																																																																																																																																																																																																																																																																																																																																																																																																																																																																																																																																																		
48	48.1	48.2	48.3	48.4	48.5	48.6	48.7	48.8	48.9	48.10																																																																																																																																																																																																																																																																																																																																																																																																																																																																																																																																																																																																																																																																																																																																																																																																																																																																																																																																																																																																																																																																																																																																		
49	49.1	49.2	49.3	49.4	49.5	49.6	49.7	49.8	49.9	49.10																																																																																																																																																																																																																																																																																																																																																																																																																																																																																																																																																																																																																																																																																																																																																																																																																																																																																																																																																																																																																																																																																																																																		
50	50.1	50.2	50.3	50.4	50.5	50.6	50.7	50.8	50.9	50.10																																																																																																																																																																																																																																																																																																																																																																																																																																																																																																																																																																																																																																																																																																																																																																																																																																																																																																																																																																																																																																																																																																																																		
51	51.1	51.2	51.3	51.4	51.5	51.6	51.7	51.8	51.9	51.10																																																																																																																																																																																																																																																																																																																																																																																																																																																																																																																																																																																																																																																																																																																																																																																																																																																																																																																																																																																																																																																																																																																																		
52	52.1	52.2	52.3	52.4	52.5	52.6	52.7	52.8	52.9	52.10																																																																																																																																																																																																																																																																																																																																																																																																																																																																																																																																																																																																																																																																																																																																																																																																																																																																																																																																																																																																																																																																																																																																		
53	53.1	53.2	53.3	53.4	53.5	53.6	53.7	53.8	53.9	53.10																																																																																																																																																																																																																																																																																																																																																																																																																																																																																																																																																																																																																																																																																																																																																																																																																																																																																																																																																																																																																																																																																																																																		
54	54.1	54.2	54.3	54.4	54.5	54.6	54.7	54.8	54.9	54.10																																																																																																																																																																																																																																																																																																																																																																																																																																																																																																																																																																																																																																																																																																																																																																																																																																																																																																																																																																																																																																																																																																																																		
55	55.1	55.2	55.3	55.4	55.5	55.6	55.7	55.8	55.9	55.10																																																																																																																																																																																																																																																																																																																																																																																																																																																																																																																																																																																																																																																																																																																																																																																																																																																																																																																																																																																																																																																																																																																																		
56	56.1	56.2	56.3	56.4	56.5	56.6	56.7	56.8	56.9	56.10																																																																																																																																																																																																																																																																																																																																																																																																																																																																																																																																																																																																																																																																																																																																																																																																																																																																																																																																																																																																																																																																																																																																		
57	57.1	57.2	57.3	57.4	57.5	57.6	57.7	57.8	57.9	57.10																																																																																																																																																																																																																																																																																																																																																																																																																																																																																																																																																																																																																																																																																																																																																																																																																																																																																																																																																																																																																																																																																																																																		
58	58.1	58.2	58.3	58.4	58.5	58.6	58.7	58.8	58.9	58.10																																																																																																																																																																																																																																																																																																																																																																																																																																																																																																																																																																																																																																																																																																																																																																																																																																																																																																																																																																																																																																																																																																																																		
59	59.1	59.2	59.3	59.4	59.5	59.6	59.7	59.8	59.9	59.10																																																																																																																																																																																																																																																																																																																																																																																																																																																																																																																																																																																																																																																																																																																																																																																																																																																																																																																																																																																																																																																																																																																																		
60	60.1	60.2	60.3	60.4	60.5	60.6	60.7	60.8	60.9	60.10																																																																																																																																																																																																																																																																																																																																																																																																																																																																																																																																																																																																																																																																																																																																																																																																																																																																																																																																																																																																																																																																																																																																		
61	61.1	61.2	61.3	61.4	61.5	61.6	61.7	61.8	61.9	61.10																																																																																																																																																																																																																																																																																																																																																																																																																																																																																																																																																																																																																																																																																																																																																																																																																																																																																																																																																																																																																																																																																																																																		
62	62.1	62.2	62.3	62.4	62.5	62.6	62.7	62.8	62.9	62.10																																																																																																																																																																																																																																																																																																																																																																																																																																																																																																																																																																																																																																																																																																																																																																																																																																																																																																																																																																																																																																																																																																																																		
63	63.1	63.2	63.3	63.4	63.5	63.6	63.7	63.8	63.9	63.10																																																																																																																																																																																																																																																																																																																																																																																																																																																																																																																																																																																																																																																																																																																																																																																																																																																																																																																																																																																																																																																																																																																																		
64	64.1	64.2	64.3	64.4	64.5	64.6	64.7	64.8	64.9	64.10																																																																																																																																																																																																																																																																																																																																																																																																																																																																																																																																																																																																																																																																																																																																																																																																																																																																																																																																																																																																																																																																																																																																		
65	65.1	65.2	65.3	65.4	65.5	65.6	65.7	65.8	65.9	65.10																																																																																																																																																																																																																																																																																																																																																																																																																																																																																																																																																																																																																																																																																																																																																																																																																																																																																																																																																																																																																																																																																																																																		
66	66.1	66.2	66.3	66.4	66.5	66.6	66.7	66.8	66.9	66.10																																																																																																																																																																																																																																																																																																																																																																																																																																																																																																																																																																																																																																																																																																																																																																																																																																																																																																																																																																																																																																																																																																																																		
67	67.1	67.2	67.3	67.4	67.5	67.6	67.7	67.8	67.9	67.10																																																																																																																																																																																																																																																																																																																																																																																																																																																																																																																																																																																																																																																																																																																																																																																																																																																																																																																																																																																																																																																																																																																																		
68	68.1	68.2	68.3	68.4	68.5	68.6	68.7	68.8	68.9	68.10																																																																																																																																																																																																																																																																																																																																																																																																																																																																																																																																																																																																																																																																																																																																																																																																																																																																																																																																																																																																																																																																																																																																		
69	69.1	69.2	69.3	69.4	69.5	69.6	69.7	69.8	69.9	69.10																																																																																																																																																																																																																																																																																																																																																																																																																																																																																																																																																																																																																																																																																																																																																																																																																																																																																																																																																																																																																																																																																																																																		
70	70.1	70.2	70.3	70.4	70.5	70.6	70.7	70.8	70.9	70.10																																																																																																																																																																																																																																																																																																																																																																																																																																																																																																																																																																																																																																																																																																																																																																																																																																																																																																																																																																																																																																																																																																																																		
71	71.1	71.2	71.3	71.4	71.5	71.6	71.7	71.8	71.9	71.10																																																																																																																																																																																																																																																																																																																																																																																																																																																																																																																																																																																																																																																																																																																																																																																																																																																																																																																																																																																																																																																																																																																																		
72	72.1	72.2	72.3	72.4	72.5	72.6	72.7	72.8	72.9	72.10																																																																																																																																																																																																																																																																																																																																																																																																																																																																																																																																																																																																																																																																																																																																																																																																																																																																																																																																																																																																																																																																																																																																		
73	73.1	73.2	73.3	73.4	73.5	73.6	73.7	73.8	73.9	73.10																																																																																																																																																																																																																																																																																																																																																																																																																																																																																																																																																																																																																																																																																																																																																																																																																																																																																																																																																																																																																																																																																																																																		
74	74.1	74.2	74.3	74.4	74.5	74.6	74.7	74.8	74.9	74.10																																																																																																																																																																																																																																																																																																																																																																																																																																																																																																																																																																																																																																																																																																																																																																																																																																																																																																																																																																																																																																																																																																																																		
75	75.1	75.2	75.3	75.4	75.5	75.6	75.7	75.8	75.9	75.10																																																																																																																																																																																																																																																																																																																																																																																																																																																																																																																																																																																																																																																																																																																																																																																																																																																																																																																																																																																																																																																																																																																																		
76	76.1	76.2	76.3	76.4	76.5	76.6	76.7	76.8	76.9	76.10																																																																																																																																																																																																																																																																																																																																																																																																																																																																																																																																																																																																																																																																																																																																																																																																																																																																																																																																																																																																																																																																																																																																		
77	77.1	77.2	77.3	77.4	77.5	77.6	77.7	77.8	77.9	77.10																																																																																																																																																																																																																																																																																																																																																																																																																																																																																																																																																																																																																																																																																																																																																																																																																																																																																																																																																																																																																																																																																																																																		
78	78.1	78.2	78.3	78.4	78.5	78.6	78.7	78.8	78.9	78.10																																																																																																																																																																																																																																																																																																																																																																																																																																																																																																																																																																																																																																																																																																																																																																																																																																																																																																																																																																																																																																																																																																																																		
79	79.1	79.2	79.3	79.4	79.5	79.6	79.7	79.8	79.9	79.10																																																																																																																																																																																																																																																																																																																																																																																																																																																																																																																																																																																																																																																																																																																																																																																																																																																																																																																																																																																																																																																																																																																																		
80	80.1	80.2	80.3	80.4	80.5	80.6	80.7	80.8	80.9	80.10																																																																																																																																																																																																																																																																																																																																																																																																																																																																																																																																																																																																																																																																																																																																																																																																																																																																																																																																																																																																																																																																																																																																		
81	81.1	81.2	81.3	81.4	81.5	81.6	81.7	81.8	81.9	81.10																																																																																																																																																																																																																																																																																																																																																																																																																																																																																																																																																																																																																																																																																																																																																																																																																																																																																																																																																																																																																																																																																																																																		
82	82.1	82.2	82.3	82.4	82.5	82.6	82.7	82.8	82.9	82.10																																																																																																																																																																																																																																																																																																																																																																																																																																																																																																																																																																																																																																																																																																																																																																																																																																																																																																																																																																																																																																																																																																																																		
83	83.1	83.2	83.3	83.4	83.5	83.6	83.7	83.8	83.9	83.10																																																																																																																																																																																																																																																																																																																																																																																																																																																																																																																																																																																																																																																																																																																																																																																																																																																																																																																																																																																																																																																																																																																																		
84	84.1	84.2	84.3	84.4	84.5	84.6	84.7	84.8	84.9	84.10																																																																																																																																																																																																																																																																																																																																																																																																																																																																																																																																																																																																																																																																																																																																																																																																																																																																																																																																																																																																																																																																																																																																		
85	85.1	85.2	85.3	85.4	85.5	85.6	85.7	85.8	85.9	85.10																																																																																																																																																																																																																																																																																																																																																																																																																																																																																																																																																																																																																																																																																																																																																																																																																																																																																																																																																																																																																																																																																																																																		
86	86.1	86.2	86.3	86.4	86.5	86.6	86.7	86.8	86.9	86.10																																																																																																																																																																																																																																																																																																																																																																																																																																																																																																																																																																																																																																																																																																																																																																																																																																																																																																																																																																																																																																																																																																																																		
87	87.1	87.2	87.3	87.4	87.5	87.6	87.7	87.8	87.9	87.10																																																																																																																																																																																																																																																																																																																																																																																																																																																																																																																																																																																																																																																																																																																																																																																																																																																																																																																																																																																																																																																																																																																																		
88	88.1	88.2	88.3	88.4	88.5	88.6	88.7	88.8	88.9	88.10																																																																																																																																																																																																																																																																																																																																																																																																																																																																																																																																																																																																																																																																																																																																																																																																																																																																																																																																																																																																																																																																																																																																		
89	89.1	89.2	89.3	89.4	89.5	89.6	89.7	89.8	89.9	89.10																																																																																																																																																																																																																																																																																																																																																																																																																																																																																																																																																																																																																																																																																																																																																																																																																																																																																																																																																																																																																																																																																																																																		
90	90.1	90.2	90.3	90.4	90.5	90.6	90.7	90.8	90.9	90.10																																																																																																																																																																																																																																																																																																																																																																																																																																																																																																																																																																																																																																																																																																																																																																																																																																																																																																																																																																																																																																																																																																																																		
91	91.1	91.2	91.3	91.4	91.5	91.6	91.7	91.8	91.9	91.10																																																																																																																																																																																																																																																																																																																																																																																																																																																																																																																																																																																																																																																																																																																																																																																																																																																																																																																																																																																																																																																																																																																																		
92	92.1	92.2	92.3	92.4	92.5	92.6	92.7	92.8	92.9	92.10																																																																																																																																																																																																																																																																																																																																																																																																																																																																																																																																																																																																																																																																																																																																																																																																																																																																																																																																																																																																																																																																																																																																		
93	93.1	93.2	93.3	93.4	93.5	93.6	93.7	93.8	93.9	93.10																																																																																																																																																																																																																																																																																																																																																																																																																																																																																																																																																																																																																																																																																																																																																																																																																																																																																																																																																																																																																																																																																																																																		
94	94.1	94.2	94.3	94.4	94.5	94.6	94.7	94.8	94.9	94.10																																																																																																																																																																																																																																																																																																																																																																																																																																																																																																																																																																																																																																																																																																																																																																																																																																																																																																																																																																																																																																																																																																																																		
95	95.1	95.2	95.3	95.4	95.5	95.6	95.7	95.8	95.9	95.10																																																																																																																																																																																																																																																																																																																																																																																																																																																																																																																																																																																																																																																																																																																																																																																																																																																																																																																																																																																																																																																																																																																																		
96	96.1	96.2	96.3	96.4	96.5	96.6	96.7	96.8	96.9	96.10																																																																																																																																																																																																																																																																																																																																																																																																																																																																																																																																																																																																																																																																																																																																																																																																																																																																																																																																																																																																																																																																																																																																		
97	97.1	97.2	97.3	97.4	97.5	97.6	97.7	97.8	97.9	97.10																																																																																																																																																																																																																																																																																																																																																																																																																																																																																																																																																																																																																																																																																																																																																																																																																																																																																																																																																																																																																																																																																																																																		
98	98.1	98.2	98.3	98.4	98.5	98.6	98.7	98.8	98.9	98.10																																																																																																																																																																																																																																																																																																																																																																																																																																																																																																																																																																																																																																																																																																																																																																																																																																																																																																																																																																																																																																																																																																																																		
99	99.1	99.2	99.3	99.4	99.5	99.6	99.7	99.8	99.9	99.10																																																																																																																																																																																																																																																																																																																																																																																																																																																																																																																																																																																																																																																																																																																																																																																																																																																																																																																																																																																																																																																																																																																																		
100	100.1	100.2	100.3	100.4	100.5	100.6	100.7	100.8	100.9	100.10																																																																																																																																																																																																																																																																																																																																																																																																																																																																																																																																																																																																																																																																																																																																																																																																																																																																																																																																																																																																																																																																																																																																		



± 0,000 = 540,000

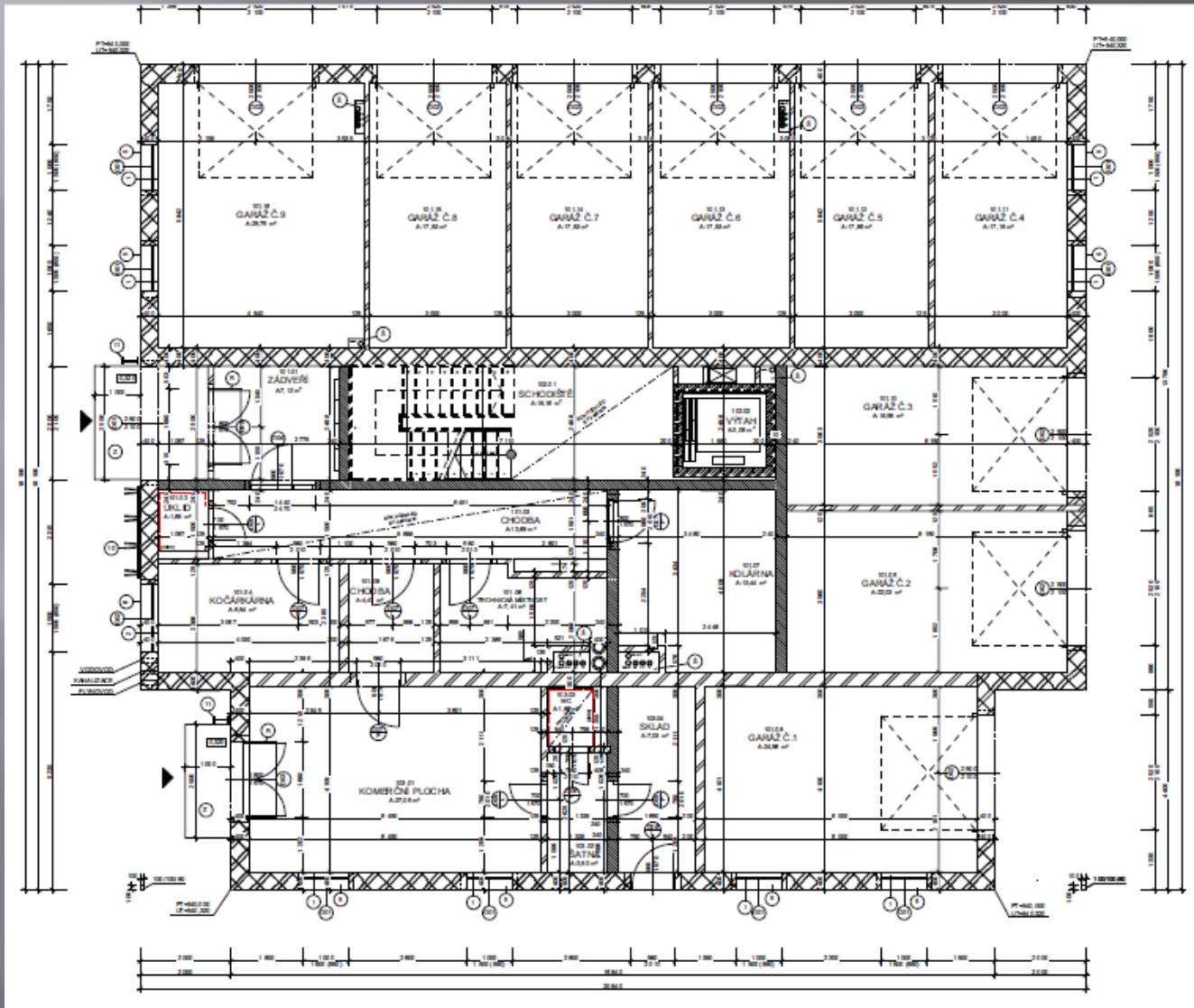
VYPRACOVALA Bc. Zuzana Buchtová	VEDOUČÍ PRÁCE doc. Dr. Ing. Luboš Podskala		VÝKONÁ ŽADATEL TECHNICKÁ A INŽENÝRSKÁ VÝSTŘEŽKA BUDOVŮ
NÁZEV STAVBY: NOVOSTAVBA BYTOVÉHO DOMU	MĚŘÍTKO: DATUM: LEDEN 2021		DOKUMENT: SP
OBJEKTOVÝ DOUBO R: DIPLOMOVÁ PRÁCE N_DIP	NÁZEV VÝKRESU: SITUACE ŠIRŠÍCH VZTAHŮ	ČÁST: C	Č. VÝKRESU: C1



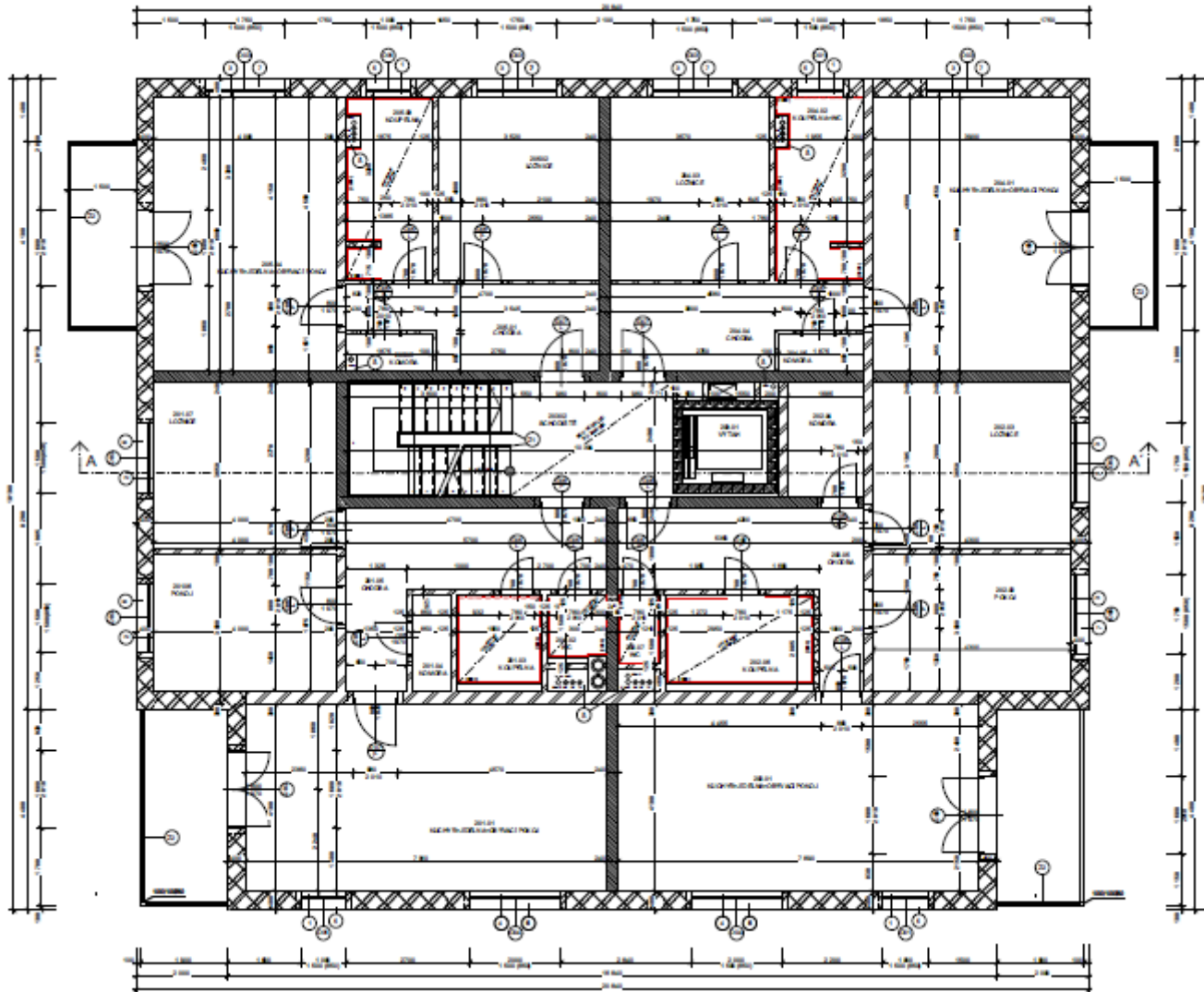




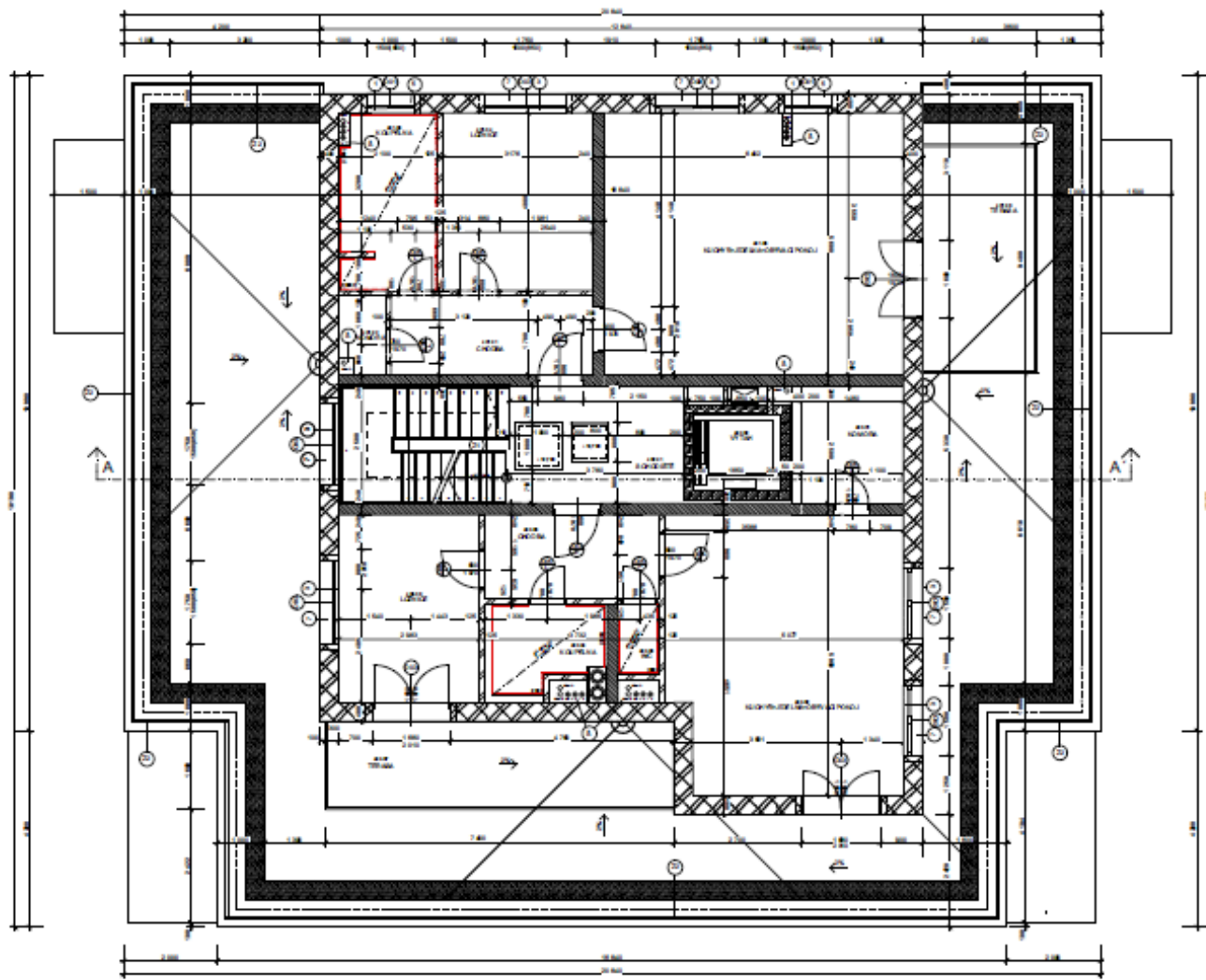
# Dispoziční řešení 1.NP



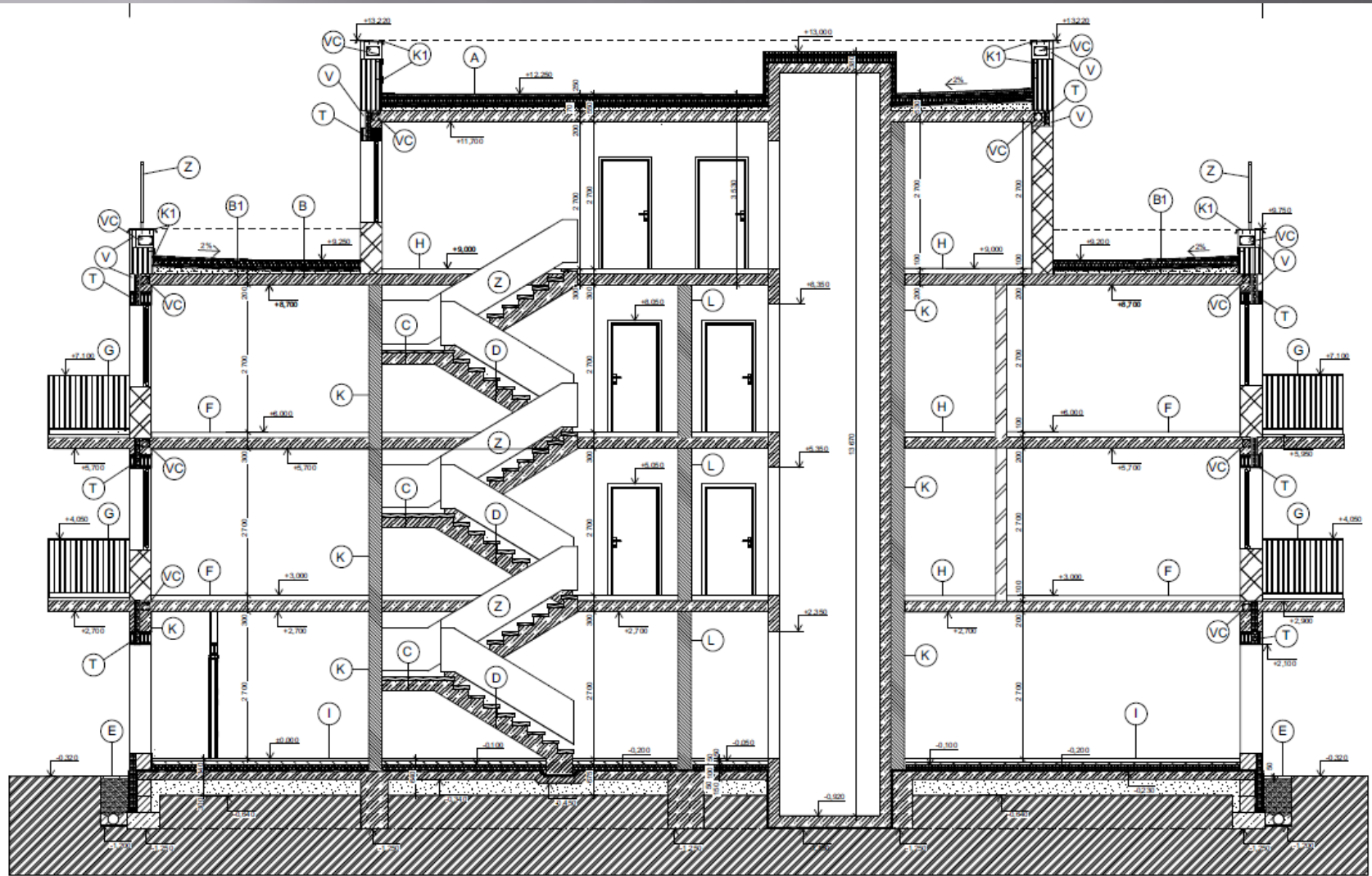
# Dispoziční řešení 2.NP, 3.NP



# Dispoziční řešení 4. NP

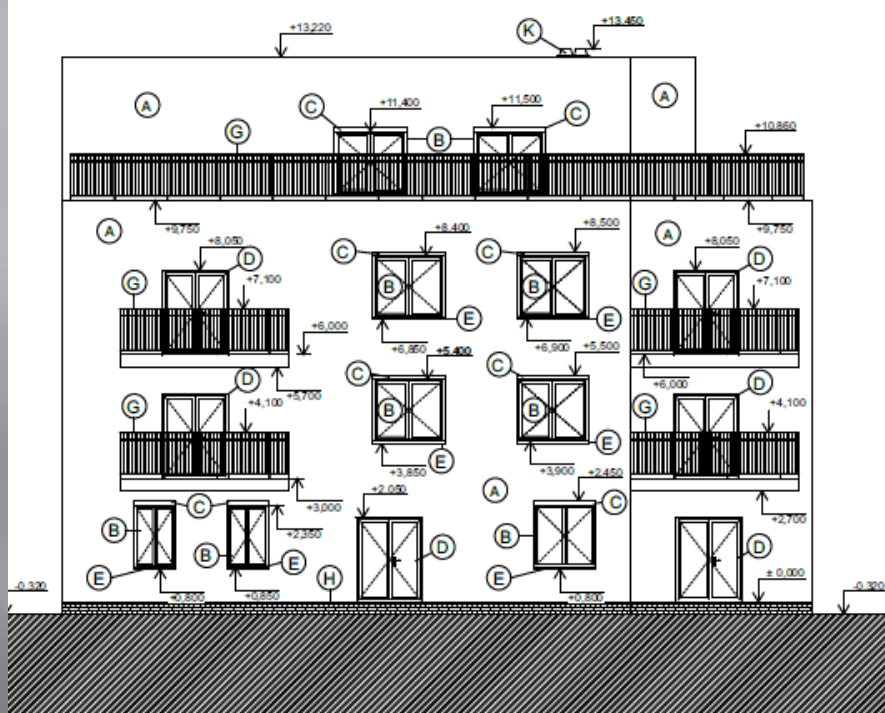


# Řez A-A'

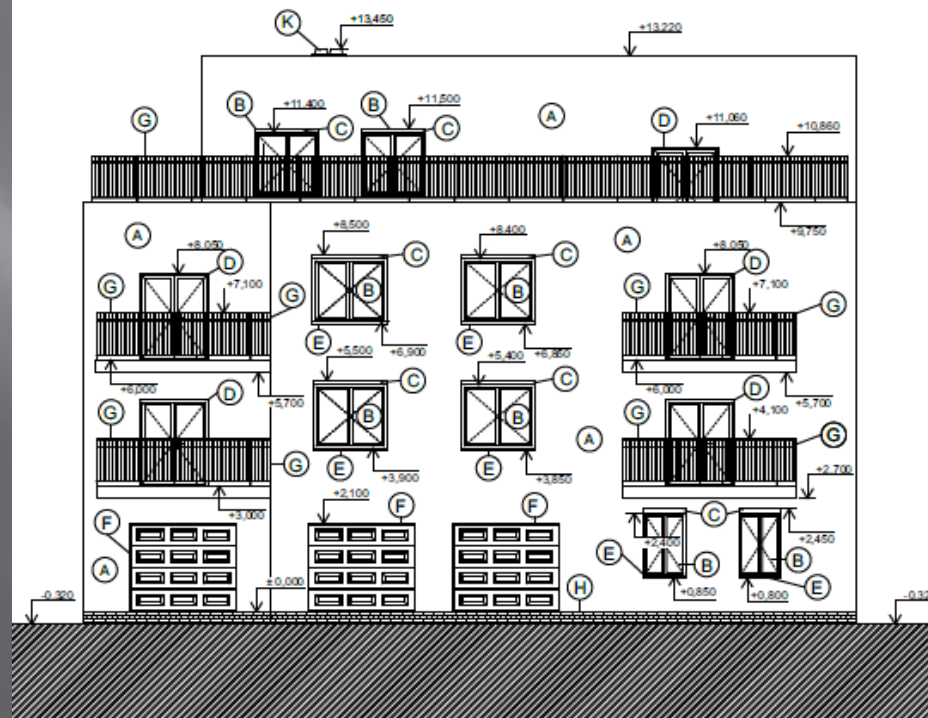


# Pohled severní a jižní

POHLED SEVERNÍ

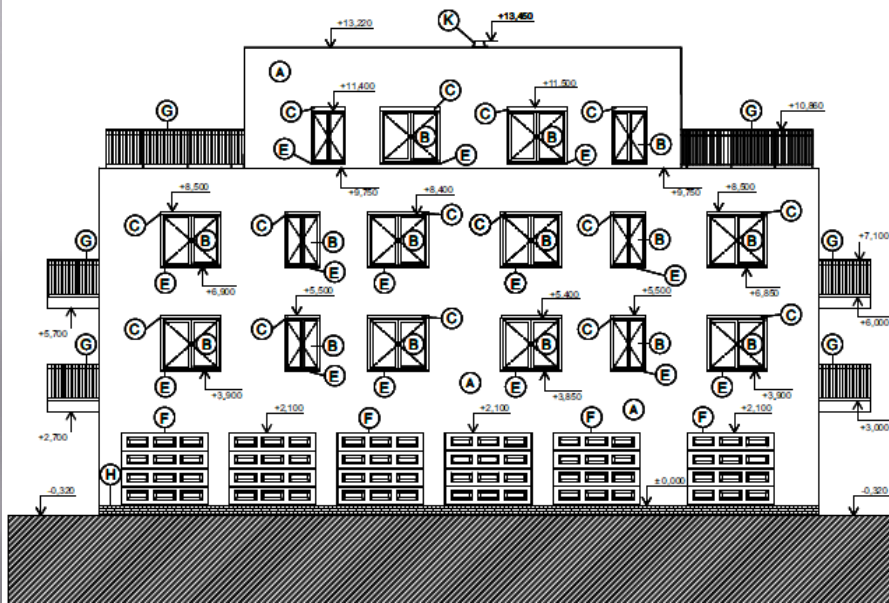


POHLED JIŽNÍ

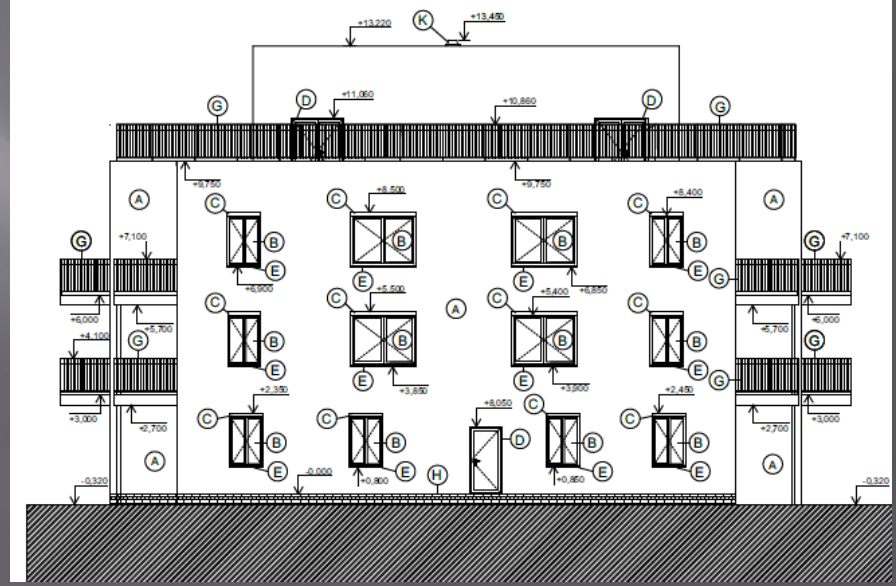


# Pohled východní a západní

POHLED VÝCHODNÍ



POHLED ZÁPADNÍ



# Závěrečné shrnutí

- Provedla jsem návrh bytového domu včetně dispozic, konstrukcí a materiálů.
- V programu jsem vypracovala všechny části projektové dokumentace pro společné povolení stavby dle platných norem a předpisů.
- Při průzkumu, sběru podkladů a projektování jsem si rozšířila znalosti v oblasti projektování staveb.
- Stanovený cíl mé diplomové práce byl splněn.



# Otázky od vedoucího práce

- Bude pro zařízení staveniště vybudováno dočasné připojení na kanalizaci, vodu a el. energii ?

# Otázky od oponenta

- Jakým způsobem studentka navrhovala základy pod objektem?
- Proč je kolem objektu navržena drenáž? Jak je řešeno odvedení vody z drenáže?
- Jak je staticky řešeno schodiště? A jak je u schodiště řešena eliminace kročejového hluku?

**Děkuji za pozornost.**