



Vysoká škola technická a ekonomická v Českých Budějovicích

Ústav technicko - technologický

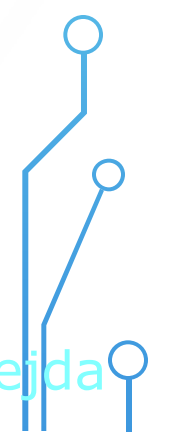
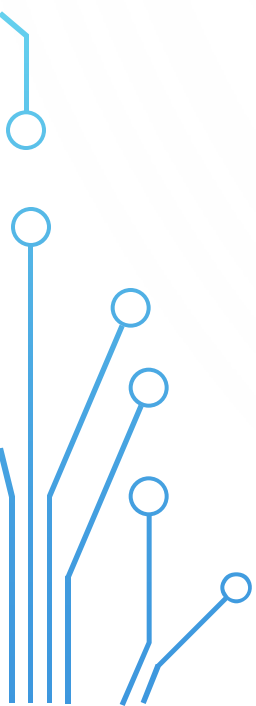
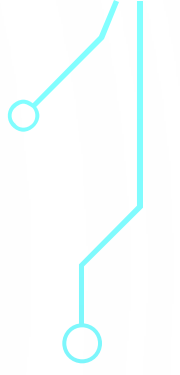
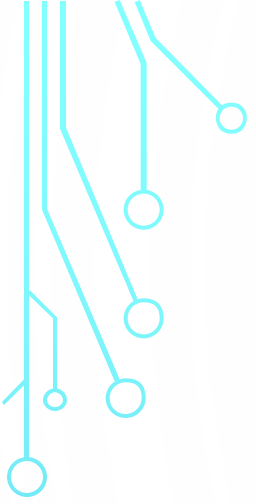


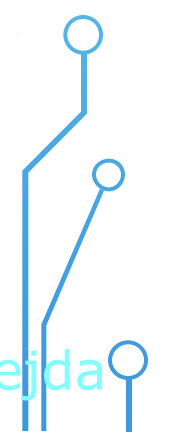
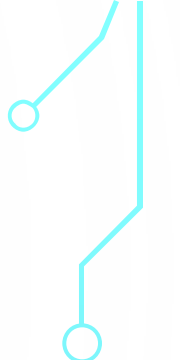
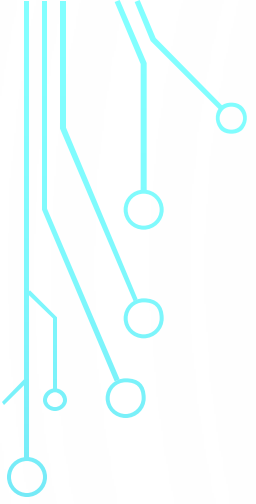
Autor bakalářské práce: **Jiří Rejda**

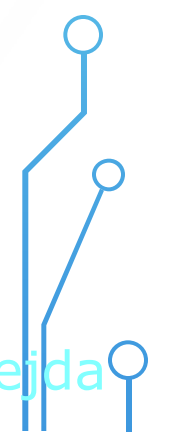
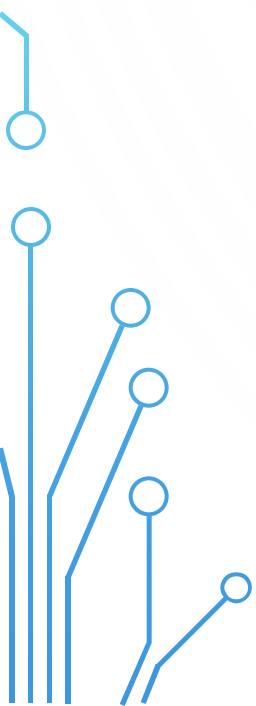
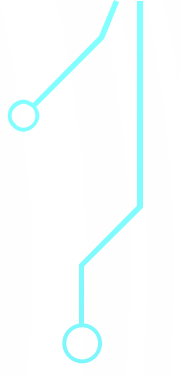
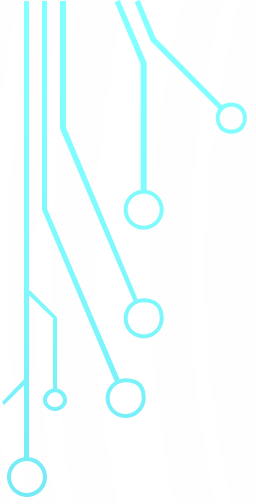
Vedoucí práce: **Mgr. Vladislav Biba, Ph.D.**

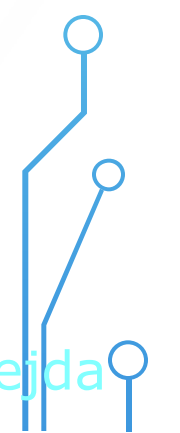
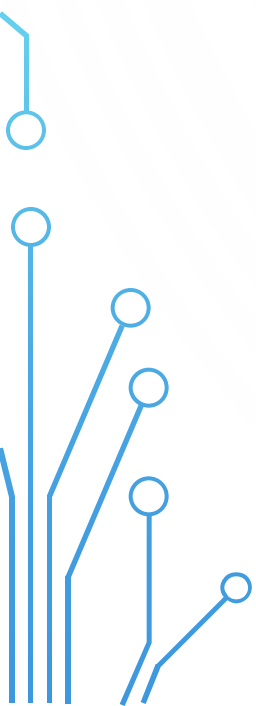
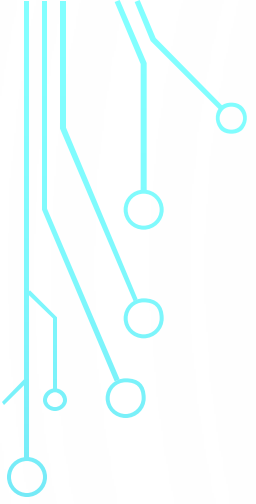
Oponent práce: **Ing. Miloslav Kubín**

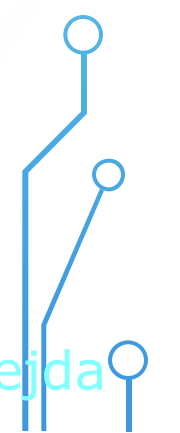
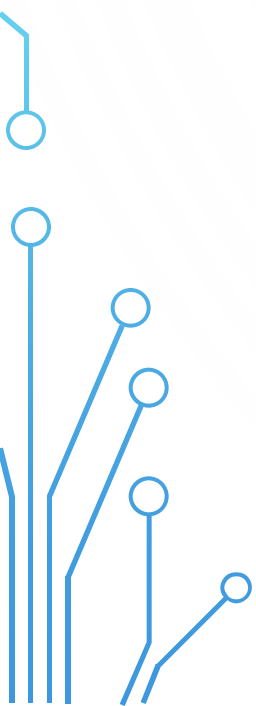
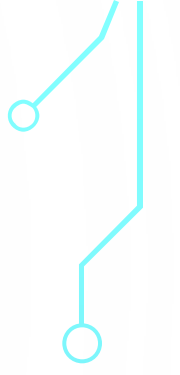
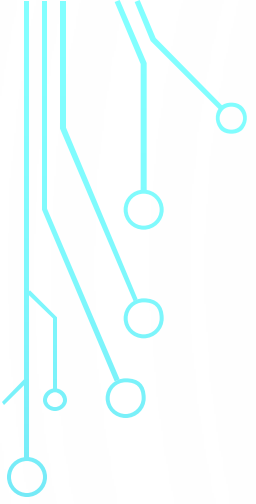
Červen 2018

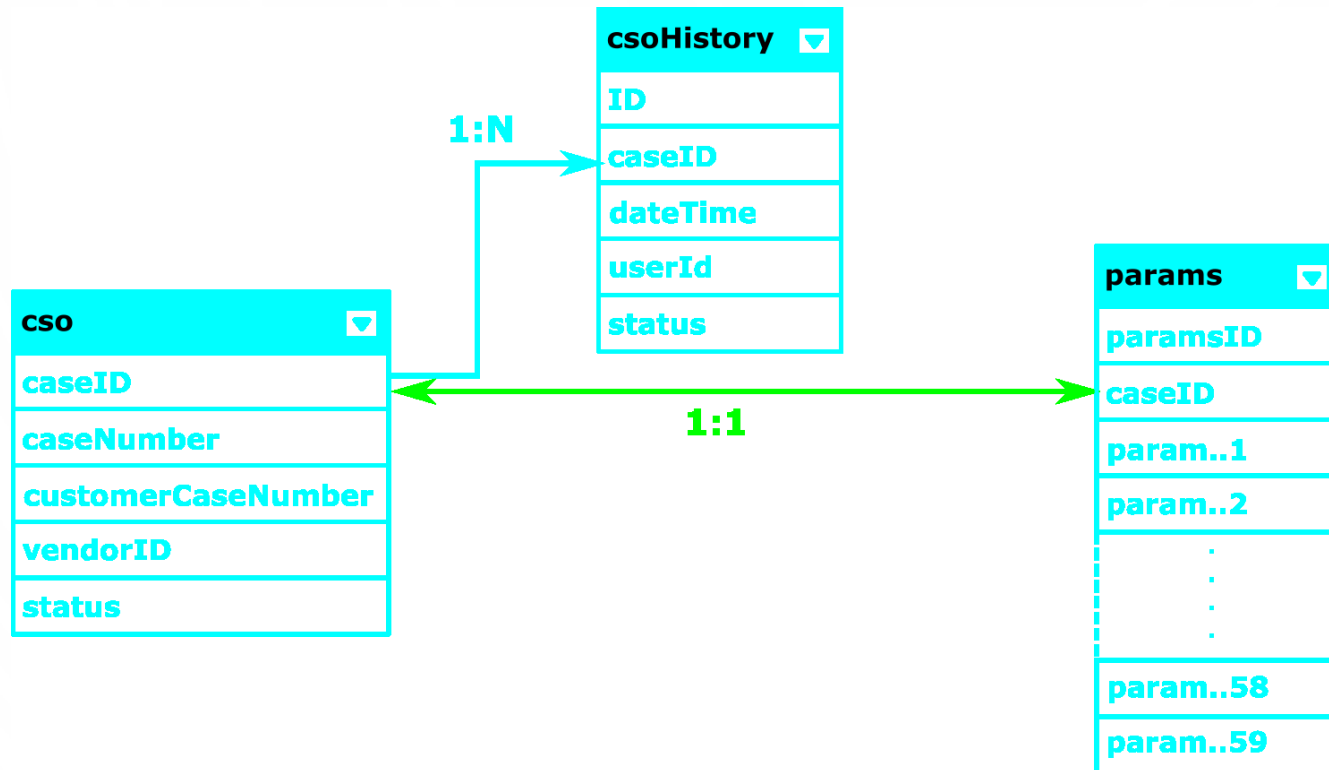


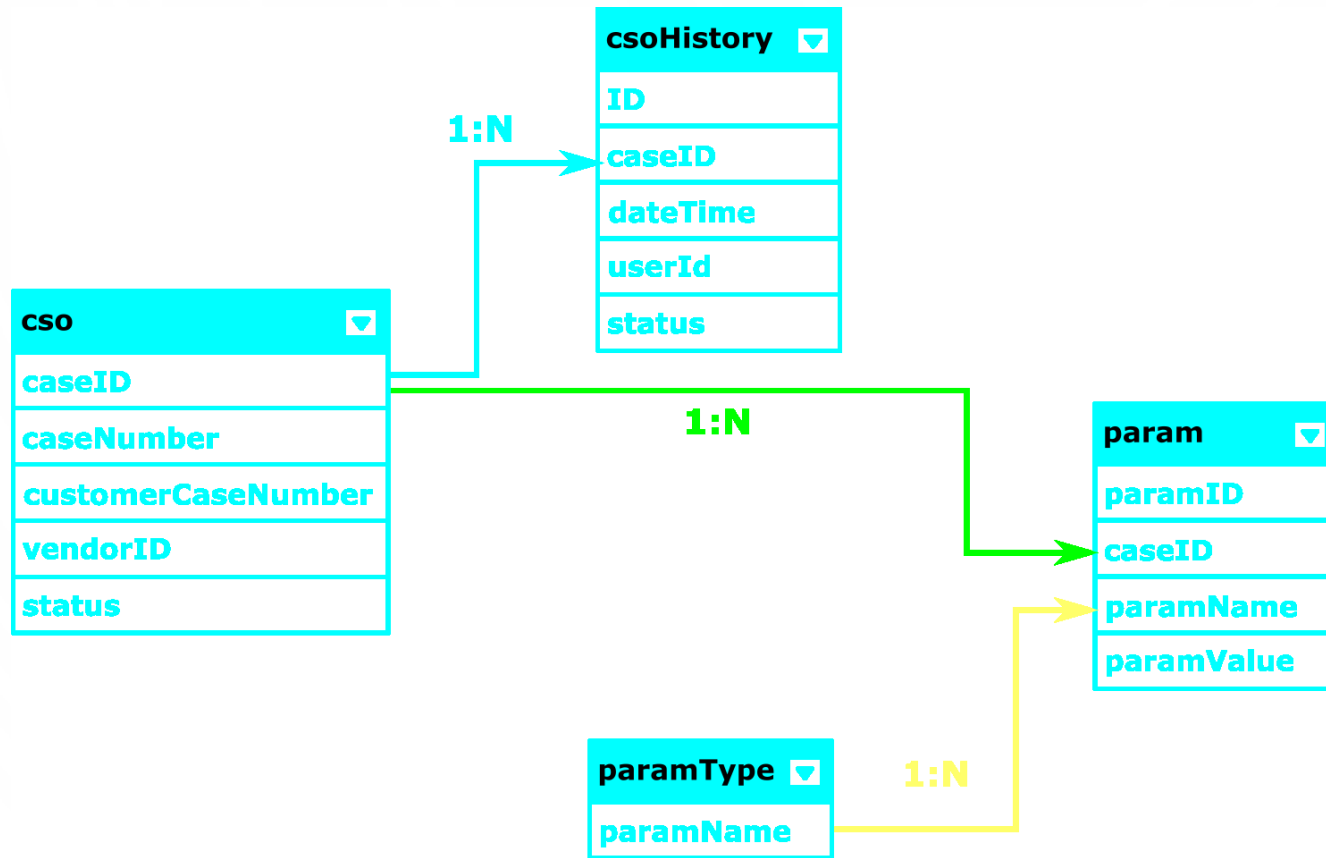




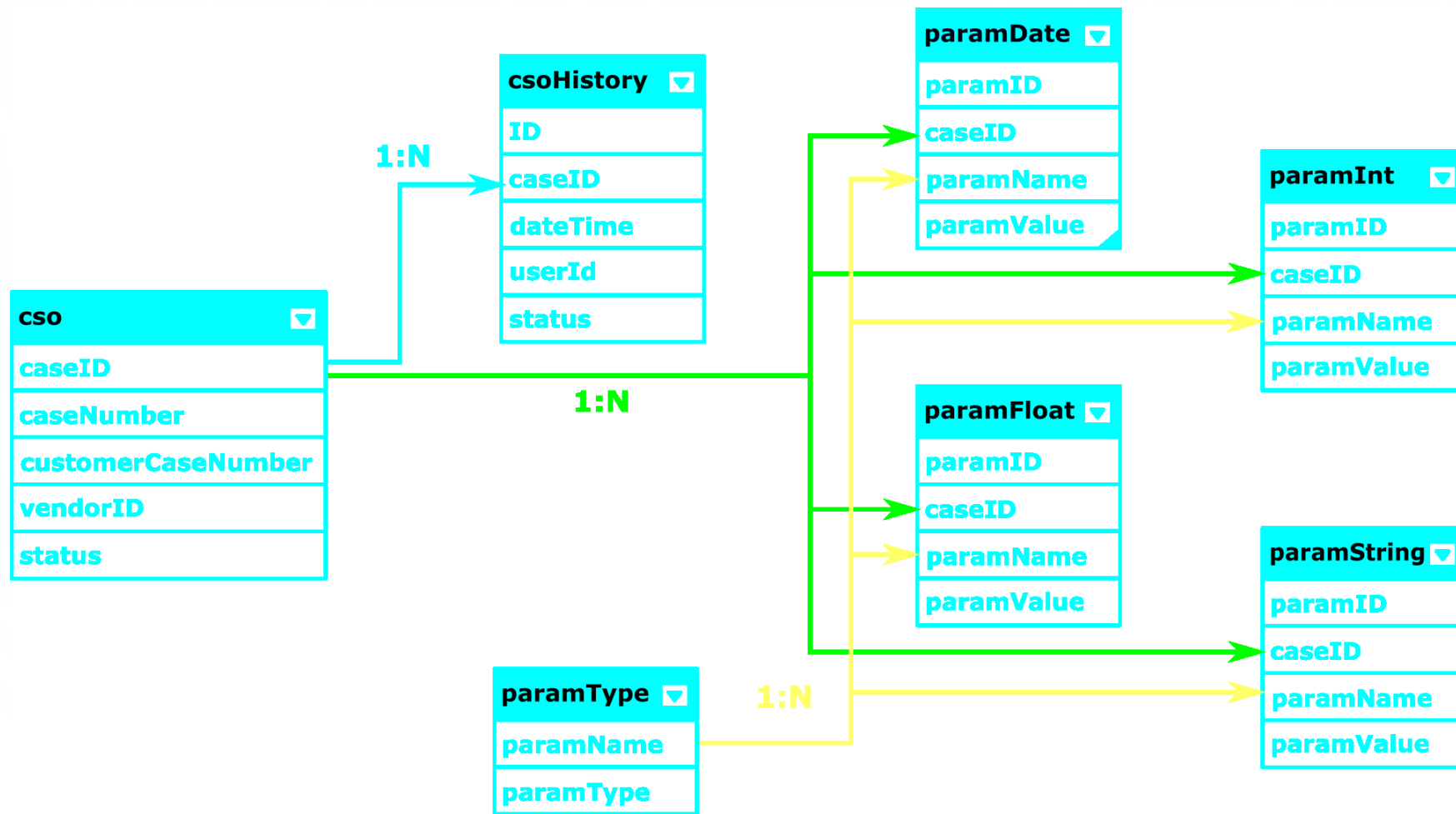


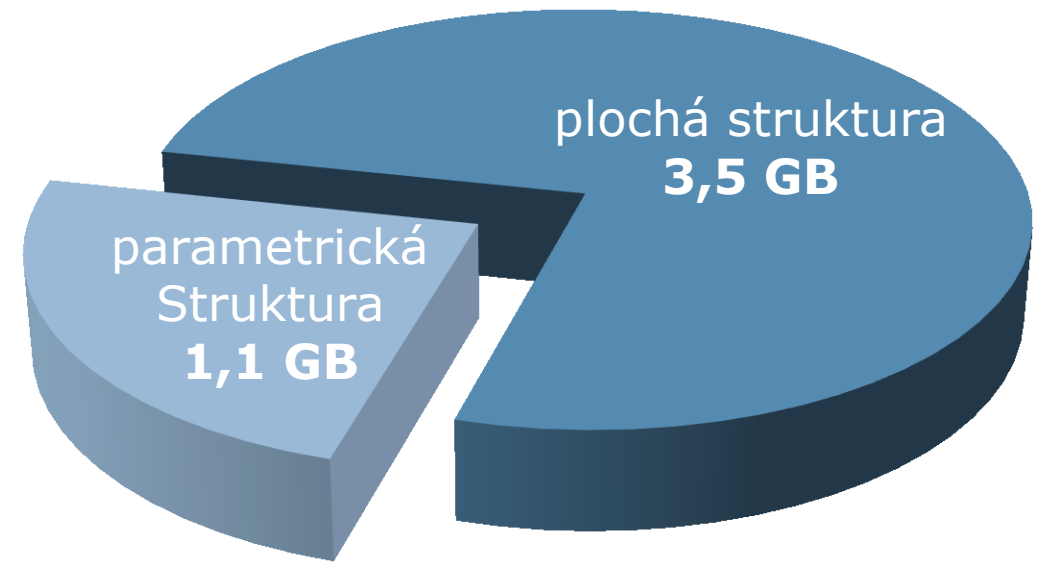
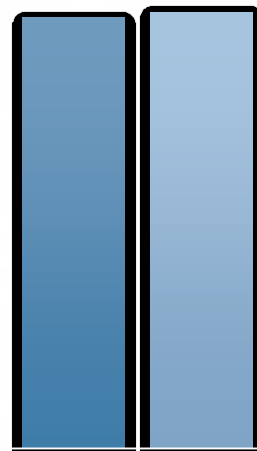
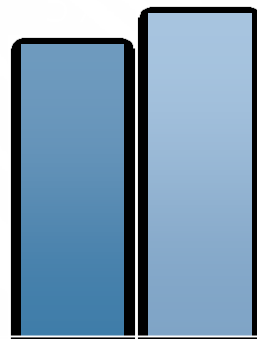
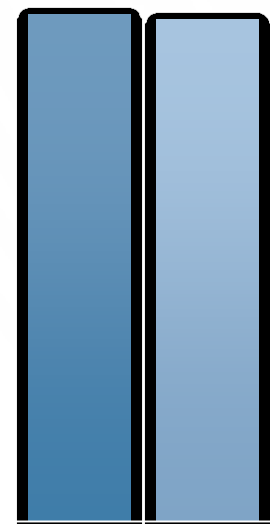


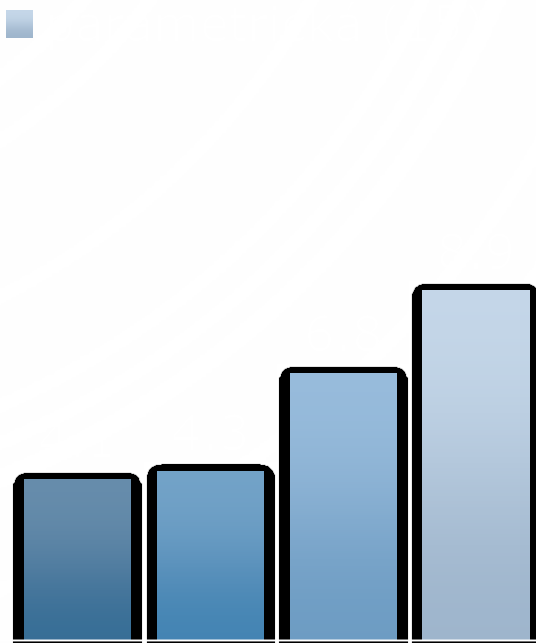
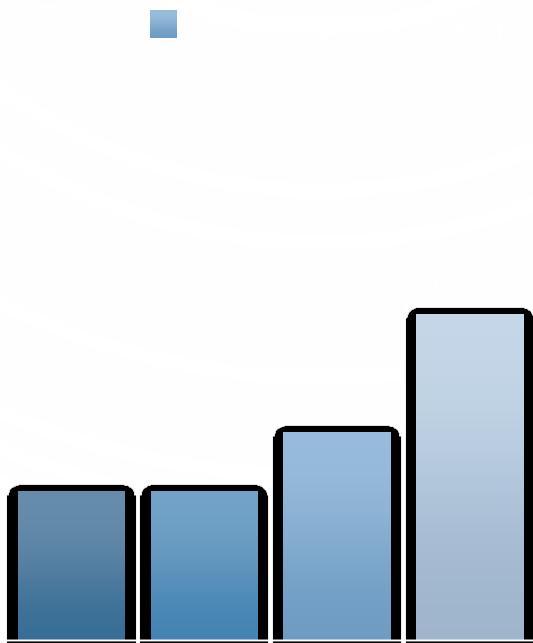
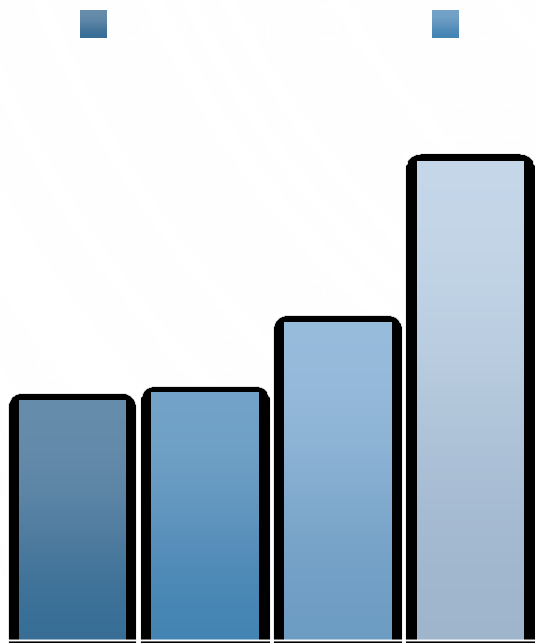


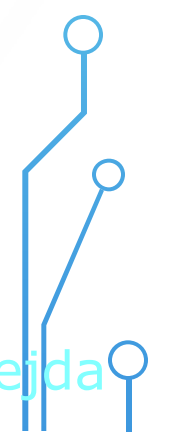
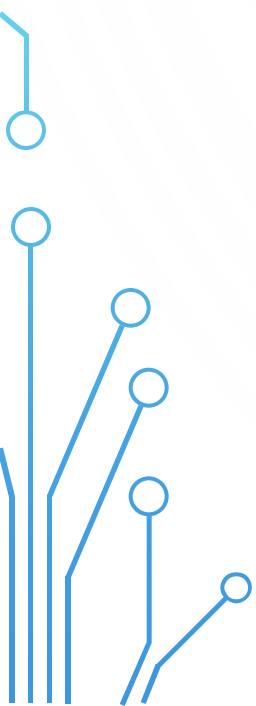
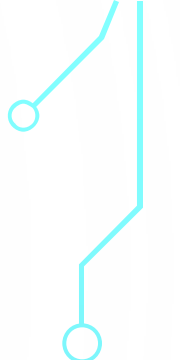
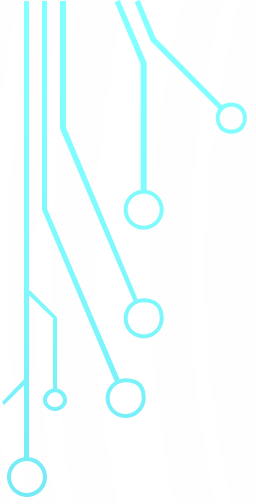














- Vlastnosti InnoDB úložiště

```
SELECT t1.* FROM t1
LEFT JOIN t2 ON( t1.id = t2.id )
WHERE t2.id IS NULL
```

```
SELECT t1.* FROM t1
LEFT JOIN t2 ON( t1.id = t2.id )
WHERE t2.id IS NULL
```

- Využití indexu na maximálním množství záznamů

