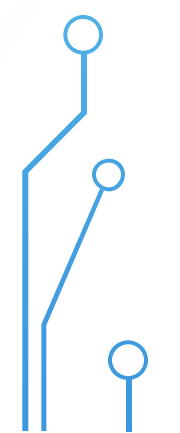
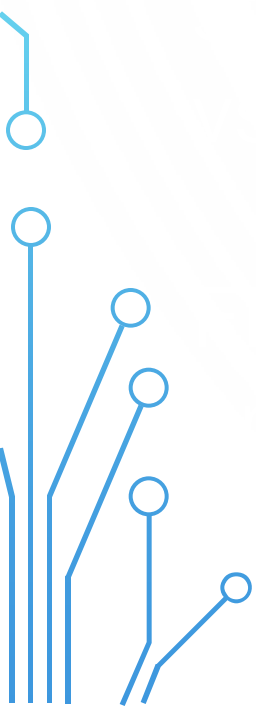
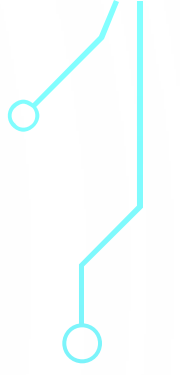
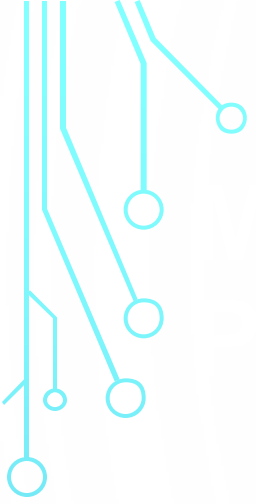


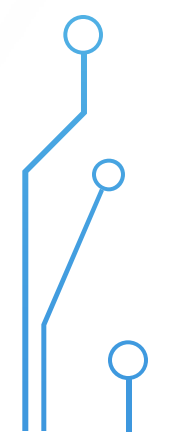
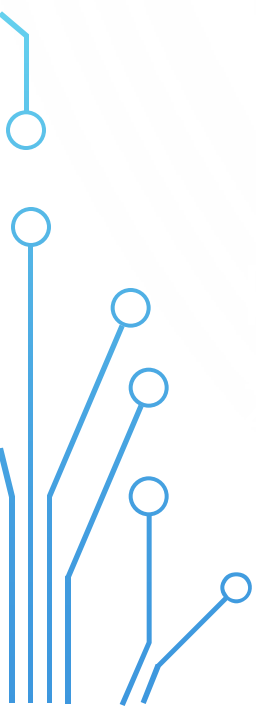
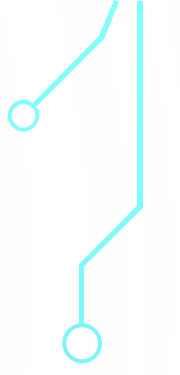
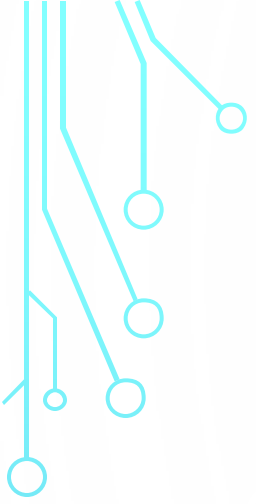


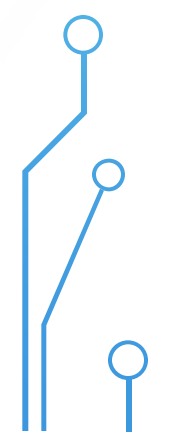
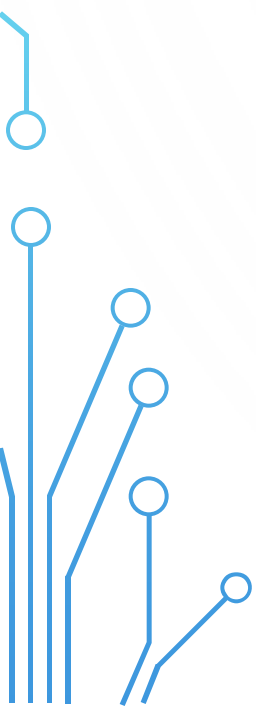
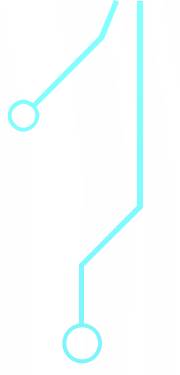
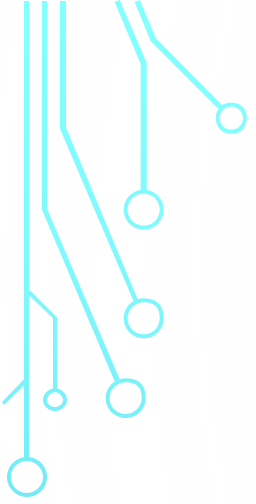
AUTOR BAKALÁŘSKÉ PRÁCE: LUKÁŠ KLEIN

VEDOUcí BAKALÁŘSKÉ PRÁCE: ING. MONIKA KARKOVÁ, PHD.

ČESKÉ BUDĚJOVICE, 2020



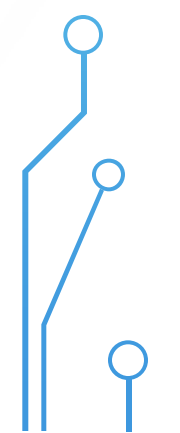
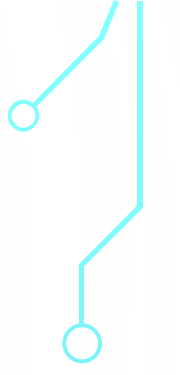
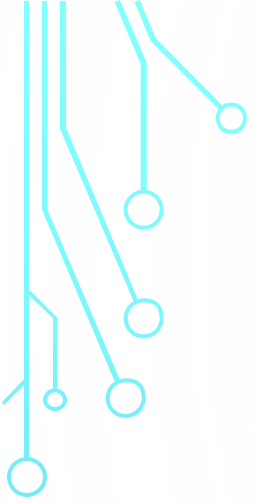


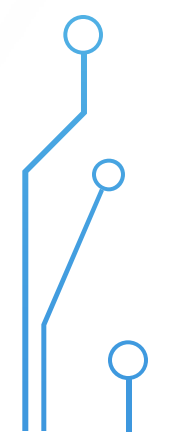
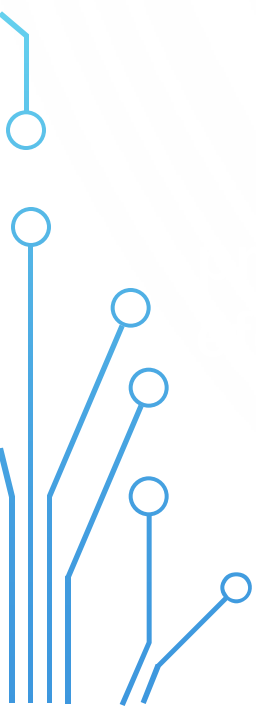
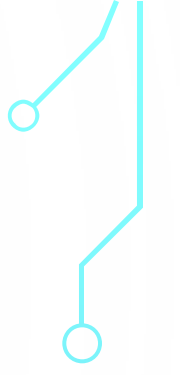
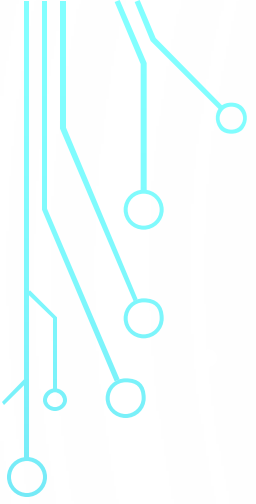






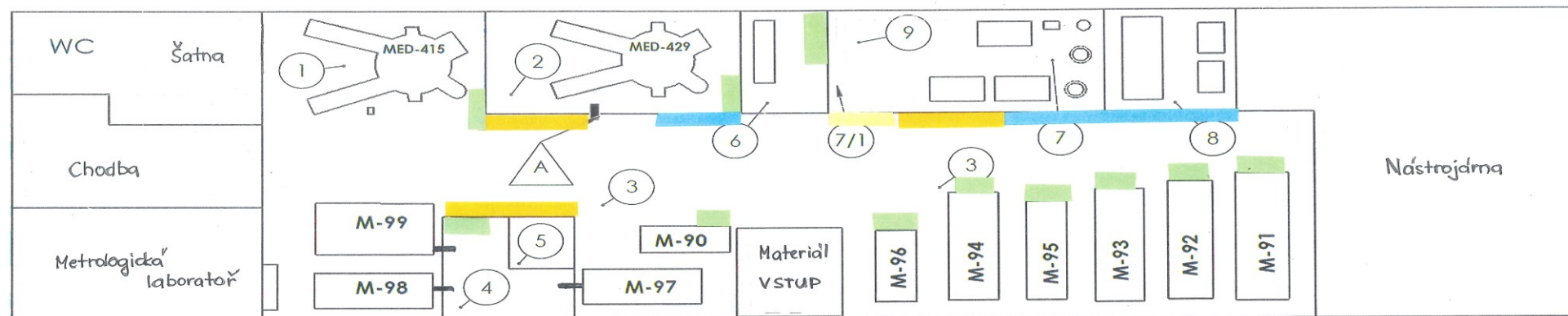








Výrobní a montážní hala 1-1-IM



Popis:

- 1 Montáž I.
- 2 Montáž II
- 3 Kontrolovaná oblast
- 4 Výrobní oblast ISO 8
- 5 Výrobní oblast ISO 9
- 6 Kancelář
- 7 Technická místnost I
- 7/1 Klimatizace
- 8 Technická místnost II
- 9 Materiál

- Zóny pro kontrolu výrobků
- Zóna pro finální výrobky
- Zóny pro obalový materiál
- Zóna pro karanténu

Stroje:

- | | |
|------------|-------------------------|
| M-92 (S34) | Demag 200-1450 |
| M-93 (S51) | Kraus Maffei 200-700C2 |
| M-94 (S52) | Kraus Maffei 130-380 AX |
| M-95 (S41) | Kraus Maffei 80-180 EX |
| M-96 (S02) | Engel 50/50 |
| M-97 (B59) | Nissei ASB 12M |
| M-98 (B56) | Nissei ASB 12/1010N |
| M-99 (Lat) | Arburg 420 C |
| MED-415 | montážní linka 1 |
| MED-429 | montážní linka 2 |



Vyznačení zón



Hotová výroba



Karanténa

